

Recombinant Human SERPIND1 protein, His-tagged

Cat. No. SERPIND1-3157H Lot. No. (See product label)

SPECIFICATION

Product Overview	Recombinant Human SERPIND1 (Gly20-Ser499) protein was fused to His-tag at C-terminus and expressed in human 293 cells (HEK293).
Species	Human
Source	HEK293
ProteinLength	Gly20-Ser499
Description	Serpin D1 is also known as Heparin cofactor 2 (HCF2), Protease inhibitor leuserpin-2 (HLS2), Heparin cofactor II (HC-II), which belongs to the serpin family. HCF2 is expressed predominantly in liver. Thrombin inhibitor activated by the glycosaminoglycans, heparin or dermatan sulfate. In the presence of the latter, SerpinD1/HC-II becomes the predominant thrombin inhibitor in place of antithrombin III (AT-III). In a glycosaminoglycan-independent manner, serpinD1/HC-II also inhibits chymotrypsin. Peptides at the N-terminal of HC-II have chemotactic activity for both monocytes and neutrophils.
Predicted N Terminal	Gly20
Form	Lyophilized from 0.22 µm filtered solution in 50 mM Tris, 150 mM NaCl, pH 7.5, 10% trehalose.
Molecular Mass	The protein has a calculated MW of 55.7 kDa. The protein migrates as 65-70 kDa under reducing (R) condition (SDS-PAGE) due to glycosylation.

 Tel: 1-631-559-9269 1-516-512-3133

 Email: info@creative-biomart.com  Fax: 1-631-938-8127

 45-1 Ramsey Road, Shirley, NY 11967, USA

Endotoxin	Less than 1.0 EU per µg by the LAL method.
Purity	>95% as determined by SDS-PAGE.
Storage	<p>For long term storage, the product should be stored at lyophilized state at -20 centigrade or lower.</p> <p>Please avoid repeated freeze-thaw cycles.</p> <p>This product is stable after storage at:</p> <p>-20 to -70 centigrade for 12 months in lyophilized state; -70 centigrade for 3 months under sterile conditions after reconstitution.</p>
Reconstitution	It is recommended that sterile water be added to the vial to prepare a stock solution of 0.2 ug/ul. Centrifuge the vial at 4°C before opening to recover the entire contents.

GENE INFORMATION

Gene Name	SERPIND1
Official Symbol	SERPIND1
Synonyms	SERPIND1; serpin peptidase inhibitor, clade D (heparin cofactor), member 1; HCF2, serine (or cysteine) proteinase inhibitor, clade D (heparin cofactor), member 1; heparin cofactor 2; D22S673; HC II; HC2; heparin cofactor II; HLS2; serpin D1; leuserpin 2; protease inhibitor leuserpin-2; serine (or cysteine) proteinase inhibitor, clade D (heparin cofactor), member 1; LS2; HCF2; HCII; THPH10
Gene ID	3053
mRNA Refseq	NM_000185
Protein Refseq	NP_000176

 Tel: 1-631-559-9269 1-516-512-3133

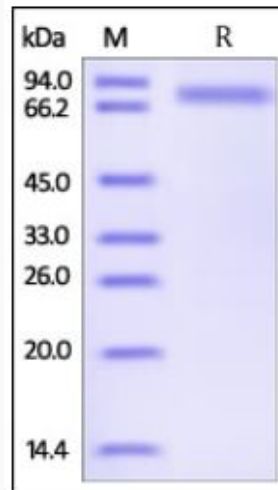
 Email: info@creative-biomart.com  Fax: 1-631-938-8127

 45-1 Ramsey Road, Shirley, NY 11967, USA

MIM 142360

UniProt ID P05546

**SDS-PAGE of
SERPIND1-3157H**



Human Serpin D1, His Tag on SDS-PAGE under reducing (R) condition. The gel was stained overnight with Coomassie Blue. The purity of the protein is greater than 95%.

Tel: 1-631-559-9269 1-516-512-3133

Email: info@creative-biomart.com Fax: 1-631-938-8127

45-1 Ramsey Road, Shirley, NY 11967, USA