

## Recombinant Human SERPIND1 Protein, His-tagged

Cat. No. SERPIND1-367H Lot. No. (See product label)

### SPECIFICATION

|                         |   |
|-------------------------|---|
| <b>Product Overview</b> | Recombinant Human SERPIND1(Asp276~Ser499) fused with His tag at N-terminal was expressed in E. coli.  |
| <b>Species</b>          | Human   |
| <b>Source</b>           | E.coli  |
| <b>ProteinLength</b>    | Asp276~Ser499   |
| <b>Description</b>      | This gene belongs to the serpin gene superfamily. Serpins play roles in many processes including inflammation, blood clotting, and cancer metastasis. Members of this family have highly conserved secondary structures with a reactive center loop that interacts with the protease active site to inhibit protease activity. This gene encodes a plasma serine protease that functions as a thrombin and chymotrypsin inhibitor. The protein is activated by heparin, dermatan sulfate, and glycosaminoglycans. Allelic variations in this gene are associated with heparin cofactor II deficiency. |
| <b>Form</b>             | PBS, pH7.4, containing 0.01% SKL, 1mM DTT, 5% Trehalose and Proclin300.   |
| <b>Molecular Mass</b>   | 29.5kDa   |
| <b>Identity</b>         | Reconstitute in PBS or others   |
| <b>Endotoxin</b>        | <1.0EU per 1g (determined by the LAL method)  |

 Tel: 1-631-559-9269 1-516-512-3133

 Email: [info@creative-biomart.com](mailto:info@creative-biomart.com)  Fax: 1-631-938-8127

 45-1 Ramsey Road, Shirley, NY 11967, USA

|                       |  |
|-----------------------|--|
| <b>Purity</b>         | > 95%  |
| <b>Applications</b>   | Positive Control; Immunogen; SDS-PAGE; WB.<br>If bio-activity of the protein is needed, please check active protein  |
| <b>Stability</b>      | The thermal stability is described by the loss rate. The loss rate was determined by accelerated thermal degradation test, that is, incubate the protein at 37 centigrade for 48h, and no obvious degradation and precipitation were observed. The loss rate is less than 5% within the expiration date under appropriate storage condition. |
| <b>Storage</b>        | Avoid repeated freeze/thaw cycles. Store at 2-8 centigrade for one month. Aliquot and store at -80 centigrade for 12 months.   |
| <b>Reconstitution</b> | Reconstitute in PBS or others  |

## GENE INFORMATION

|                        |  |
|------------------------|--|
| <b>Gene Name</b>       | <a href="#">SERPIND1 serpin peptidase inhibitor, clade D (heparin cofactor), member 1 [ Homo sapiens ]</a>   |
| <b>Official Symbol</b> | <a href="#">SERPIND1</a>   |
| <b>Synonyms</b>        | SERPIND1; serpin peptidase inhibitor, clade D (heparin cofactor), member 1; HCF2, serine (or cysteine) proteinase inhibitor, clade D (heparin cofactor), member 1; heparin cofactor 2; D22S673; HC II; HC2; heparin cofactor II; HLS2; serpin D1; leuserpin 2; protease inhibitor leuserpin-2; serine (or cysteine) proteinase inhibitor, clade D (heparin cofactor), member 1; LS2; HCF2; HCII; THPH10; |
| <b>Gene ID</b>         | <a href="#">3053</a>   |
| <b>mRNA Refseq</b>     | <a href="#">NM_000185</a>  |

 Tel: 1-631-559-9269 1-516-512-3133

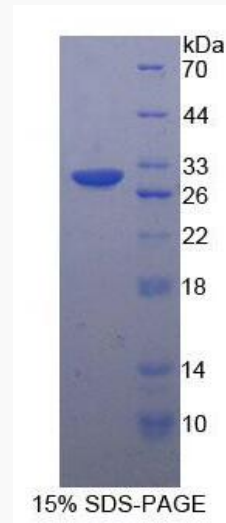
 Email: [info@creative-biomart.com](mailto:info@creative-biomart.com)  Fax: 1-631-938-8127

 45-1 Ramsey Road, Shirley, NY 11967, USA

**Protein Refseq** NP\_000176

**MIM** 142360

**UniProt ID** P05546



 Tel: 1-631-559-9269 1-516-512-3133

 Email: [info@creative-biomart.com](mailto:info@creative-biomart.com)  Fax: 1-631-938-8127

 45-1 Ramsey Road, Shirley, NY 11967, USA