

Recombinant Human SERPINE1 Protein, Myc/DDK-tagged, C13 and N15-labeled

Cat. No. SERPINE1-2400H **Lot. No.** (See product label)

SPECIFICATION

Product Overview

SERPINE1 MS Standard C13 and N15-labeled recombinant protein (NP_000593) with a C-terminal MYC/DDK tag, was expressed in HEK293 cells.

Species

Human

Source

HEK293

Description

This gene encodes a member of the serine proteinase inhibitor (serpin) superfamily. This member is the principal inhibitor of tissue plasminogen activator (tPA) and urokinase (uPA), and hence is an inhibitor of fibrinolysis. Defects in this gene are the cause of plasminogen activator inhibitor-1 deficiency (PAI-1 deficiency), and high concentrations of the gene product are associated with thrombophilia. Alternatively spliced transcript variants encoding different isoforms have been found for this gene.

Molecular Mass

45.1 kDa

AA Sequence

MQMSPALTCLVLGLALVFGEGSAVHHPPSYVAHLASDFGVRVFQQVAQASKDRNV
VFSPYGVASVLAMLQLTTGGETQQQQAAMGFKIDDKGMALRHLKELMGPWN
KDEISTTDAIFVQRDLKLVQGFMPHFFRLFRSTVKQVDFSEVERARFIINDWVKTHTK
GMISNLLGKGAVDQLTRLVLVNALYFNGQWKTPFPDSSTHRRLFHKSDGSTVSVPM
MAQTNKFNYTEFTTPDGHYYDILELPYHGDTLMSFIAAPYEKEVPLSALTNILSAQLIS
HWKGNMTRLPRLLVLPKFSLETEVDLRKPLENLGMTDMFRQFQADFTSLSDQEPLH
VAQALQKVKIEVNESGTVASSSTAVIVSARMAPEEIIMDRPFLFVVRHNPTGTVLFMG

 Tel: 1-631-559-9269 1-516-512-3133

 Email: info@creative-biomart.com  Fax: 1-631-938-8127

 45-1 Ramsey Road, Shirley, NY 11967, USA

QVMEPTRTRPLEQKLISEEDLAANDILDYKDDDDKV

Purity > 80% as determined by SDS-PAGE and Coomassie blue staining

Stability Stable for 3 months from receipt of products under proper storage and handling conditions.

Storage Store at -80 centigrade. Avoid repeated freeze-thaw cycles.

Concentration 50 µg/mL as determined by BCA

Storage Buffer 100 mM glycine, 25 mM Tris-HCl, pH 7.3.

GENE INFORMATION

Gene Name SERPINE1 serpin family E member 1 [Homo sapiens (human)]

Official Symbol SERPINE1

Synonyms SERPINE1; serpin peptidase inhibitor, clade E (nexin, plasminogen activator inhibitor type 1), member 1; PAI1, PLANH1, serine (or cysteine) proteinase inhibitor, clade E (nexin, plasminogen activator inhibitor type 1), member 1; plasminogen activator inhibitor 1; PAI; plasminogen activator inhibitor; type I; serpin E1; endothelial plasminogen activator inhibitor; serine (or cysteine) proteinase inhibitor, clade E (nexin, plasminogen activator inhibitor type 1), member 1; PAI1; PAI-1; PLANH1;

Gene ID 5054

mRNA Refseq NM_000602

Protein Refseq NP_000593

 Tel: 1-631-559-9269 1-516-512-3133

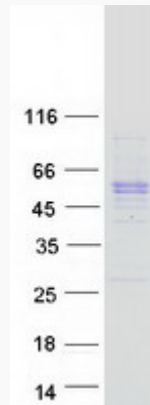
 Email: info@creative-biomart.com  Fax: 1-631-938-8127

 45-1 Ramsey Road, Shirley, NY 11967, USA

MIM 173360

UniProt ID P05121

SDS-PAGE



 Tel: 1-631-559-9269 1-516-512-3133

 Email: info@creative-biomart.com  Fax: 1-631-938-8127

 45-1 Ramsey Road, Shirley, NY 11967, USA