

Active Recombinant Human SERPINE1 Protein, glycosylated

Cat. No. SERPINE1-2458H Lot. No. (See product label)

SPECIFICATION

Product Overview	Recombinant glycosylated wild type human PAI-1 was produced in <i>insect cells</i> with molecular weight of ~46,000 Da. Active form.
Species	Human
Source	Insect Cells
Description	Plasminogen activator inhibitor-1 (PAI-1), a member of the serine protease inhibitor (serpin) super family. PAI-1 is the principal inhibitor of tissue plasminogen activator and urokinase, the activators of plasminogen and hence fibrinolysis. PAI-1 is mainly produced by the endothelium but is also secreted by other tissue types, such as adipose tissue.
Concentration	2.5 mg/ml.
Buffer	0.05M Sodium Phosphate; 0.1M NaCl; 1mM EDTA; pH 6.6.
Form	Frozen liquid.
Minimum Shelf Life	3 years from delivery.
Storage	-70°C.

GENE INFORMATION

 Tel: 1-631-559-9269 1-516-512-3133

 Email: info@creative-biomart.com  Fax: 1-631-938-8127

 45-1 Ramsey Road, Shirley, NY 11967, USA



Gene Name	SERPINE1 serpin peptidase inhibitor, clade E (nexin, plasminogen activator inhibitor type 1), member 1 [Homo sapiens]
Synonyms	SERPINE 1; serpin peptidase inhibitor, clade E (nexin, plasminogen activator inhibitor type 1), member 1; Plasminogen activator inhibitor 1; Endothelial plasminogen activator inhibitor; PAIE; Clade E; PLANH1; SERPINE1; PAI; PAI-1; PAI1; plasminogen activator inhibitor-1; plasminogen activator inhibitor, type I; serine (or cysteine) proteinase inhibitor, clade E (nexin, plasminogen activator inhibitor type 1), member 1; Endothelial plasminogen activator inhibitor
Gene ID	5054
mRNA Refseq	NM_000602
Protein Refseq	NP_000593
MIM	173360
UniProt ID	P05121
Chromosome Location	7q21.3-q22
Pathway	Complement and coagulation cascades; Hemostasis
Function	peptidase inhibitor activity; protease binding; protein binding; serine-type endopeptidase activity; serine-type endopeptidase inhibitor activity; serine-type endopeptidase inhibitor activity

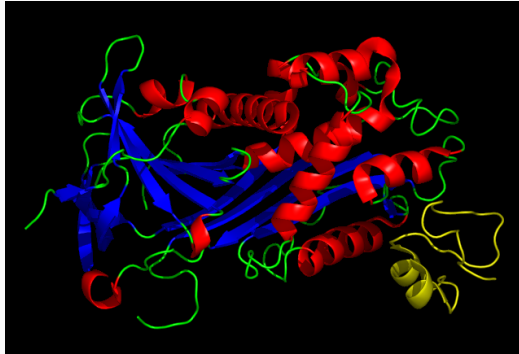
Tel: 1-631-559-9269 1-516-512-3133

Email: info@creative-biomart.com Fax: 1-631-938-8127

45-1 Ramsey Road, Shirley, NY 11967, USA



**PAI-1 in complex
with the SMB domain
of Vitronectin PDB
1OC0.**



 Tel: 1-631-559-9269 1-516-512-3133

 Email: info@creative-biomart.com  Fax: 1-631-938-8127

 45-1 Ramsey Road, Shirley, NY 11967, USA