

Recombinant Human SERPINE1 protein, His-tagged

Cat. No. SERPINE1-2601H Lot. No. (See product label)

SPECIFICATION

Product Overview	Recombinant Human SERPINE1 protein(1-402 aa), fused with N-terminal His tag, was expressed in E. coli.
Species	Human
Source	E.coli
ProteinLength	1-402 aa
Tag	N-His
Form	The purified protein was Lyophilized from sterile PBS (58mM Na ₂ HPO ₄ , 17mM NaH ₂ PO ₄ , 68mM NaCl, pH7.4). 5 % trehalose and 5 % mannitol are added as protectant before lyophilization. The elution buffer contain 300mM imidazole.
Purity	95%, by SDS-PAGE with Coomassie Brilliant Blue staining.
Storage	Short-term storage: Store at 2-8°C for (1-2 weeks). Long-term storage: Aliquot and store at -20°C to -80°C for up to 3 months, reconstitution with sterile water and addition of an equal volume of glycerol. Avoid repeat freeze-thaw cycles.
Reconstitution	Reconstitute at 0.25 µg/µl in 200 µl sterile water for short-term storage. After reconstitution with sterile water, if glycerol has no effect on subsequent experiments, it is recommended to add an equal volume of glycerol for long-term

 Tel: 1-631-559-9269 1-516-512-3133

 Email: info@creative-biomart.com  Fax: 1-631-938-8127

 45-1 Ramsey Road, Shirley, NY 11967, USA

storage.

AA Sequence

MQMSPALTCLVLGLALVFGEGSAVHHPPSYVAHLASDFGVRVVFQQVAQASKDRNV
 VFSPYGVASVLAMLQLTTGGETQQQIQAAAMGFKIDDKGMAPALRHLYKELMGPWN
 KDEISTTDAIFVQRDLKLVQGFMPHFFRLFRSTVKQVDFSEVERARFIINDWVKTHTK
 GMISNLLGKGAVDQLTRLVLVNALYFNGQWKTPFPDSSTHRRLFHKSDGSTVSVPM
 MAQTNKFNYTEFTTPDGHYYDILELPYHGDTLSMFIAAPYEKEVPLSALTNILSAQLIS
 HWKGNMTRLRLLVLPKFSLETEVDLRKPLENLGMTDMFRQFQADFTSLSDQEPLH
 VAQALQKVKIEVNESGTVASSSTAVIVSARMAPEEIIIMDRPFLFVVRHNPTGTVLFMG
 QVMEP

GENE INFORMATION

Gene Name

SERPINE1 serpin peptidase inhibitor, clade E (nexin, plasminogen activator inhibitor type 1), member 1 [Homo sapiens]

Official Symbol

SERPINE1

Synonyms

SERPINE1; serpin peptidase inhibitor, clade E (nexin, plasminogen activator inhibitor type 1), member 1; PAI1, PLANH1, serine (or cysteine) proteinase inhibitor, clade E (nexin, plasminogen activator inhibitor type 1), member 1; plasminogen activator inhibitor 1; PAI; plasminogen activator inhibitor; type I; serpin E1; endothelial plasminogen activator inhibitor; serine (or cysteine) proteinase inhibitor, clade E (nexin, plasminogen activator inhibitor type 1), member 1; PAI1; PAI-1; PLANH1;

Gene ID

5054

mRNA Refseq

NM_000602

Protein Refseq

NP_000593

 Tel: 1-631-559-9269 1-516-512-3133

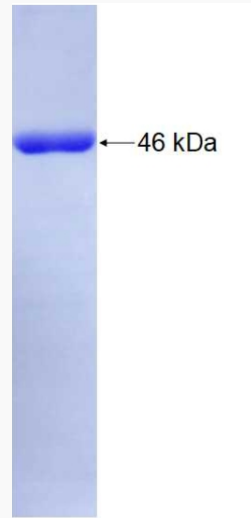
 Email: info@creative-biomart.com  Fax: 1-631-938-8127

 45-1 Ramsey Road, Shirley, NY 11967, USA

MIM 173360

UniProt ID P05121

SDS-PAGE



Tel: 1-631-559-9269 1-516-512-3133

Email: info@creative-biomart.com Fax: 1-631-938-8127

45-1 Ramsey Road, Shirley, NY 11967, USA