

# Recombinant Rabbit Serpin Peptidase Inhibitor, Clade E (nexin, plasminogen activator inhibitor type 1), Member 1

**Cat. No.** SERPINE1-5320R    **Lot. No.** (See product label)

## SPECIFICATION

<b>Product Overview</b>	Recombinant Rabbit SERPINE1 is a useful control for experiments when used in conjunction with the active form.
<b>Species</b>	Rabbit
<b>Source</b>	E.coli
<b>Description</b>	SERPINE1 is a protein that in humans is encoded by the SERPINE1 gene. SERPINE1 is a serine protease inhibitor (serpin) that functions as the principal inhibitor of tissue plasminogen activator (tPA) and urokinase (uPA), the activators of plasminogen and hence fibrinolysis (the physiological breakdown of blood clots). It is a serine protease inhibitor (serpin) protein (SERPINE1).
<b>Concentration</b>	2.5 mg/ml
<b>Form</b>	Liquid in 0.1 M HEPES + 0.1 M NaCl, pH 7.4.
<b>Molecular Weight</b>	43.0 kDa
<b>Storage</b>	Store in working aliquots at -80°C. Avoid repeated freeze-thaw cycles.
<b>Official Symbol</b>	SERPINE1

## GENE INFORMATION

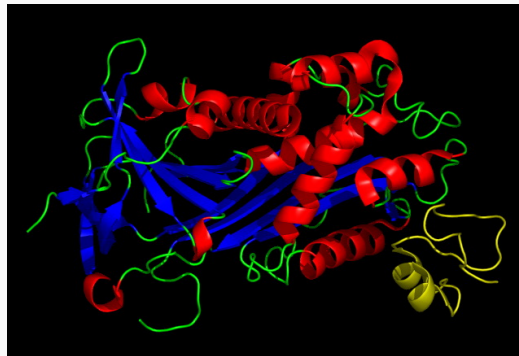
 Tel: 1-631-559-9269    1-516-512-3133

 Email: [info@creative-biomart.com](mailto:info@creative-biomart.com)     Fax: 1-631-938-8127

 45-1 Ramsey Road, Shirley, NY 11967, USA

<b>Gene Name</b>	SERPINE1 serpin peptidaseinhibitor, clade E (nexin, plasminogen activator inhibitor type 1), member 1[ <i>Oryctolagus cuniculus</i> ]
<b>Synonyms</b>	SERPINE1; serpinpeptidase inhibitor, clade E (nexin, plasminogen activator inhibitor type 1),member 1; putative plasminogen activator inhibitor-1
<b>Gene ID</b>	100009588
<b>mRNA Refseq</b>	XM_002722823
<b>Protein Refseq</b>	XP_002722869

**PAI-1 in complexwith  
the SMB domain of  
Vitronectin PDB  
1OC0**



 Tel: 1-631-559-9269 1-516-512-3133

 Email: [info@creative-biomart.com](mailto:info@creative-biomart.com)  Fax: 1-631-938-8127

 45-1 Ramsey Road, Shirley, NY 11967, USA