

# Recombinant Full Length Human SERPINE2 Protein, C-Flag-tagged

**Cat. No.** SERPINE2-1219HFL    **Lot. No.** (See product label)

## SPECIFICATION

<b>Product Overview</b>	Recombinant Full Length Human SERPINE2 Protein, fused to Flag-tag at C-terminus, was expressed in Mammalian cells.
<b>Species</b>	Human
<b>Source</b>	Mammalian Cells
<b>Description</b>	This gene encodes a member of the serpin family of proteins, a group of proteins that inhibit serine proteases. Thrombin, urokinase, plasmin and trypsin are among the proteases that this family member can inhibit. This gene is a susceptibility gene for chronic obstructive pulmonary disease and for emphysema. Alternative splicing results in multiple transcript variants.
<b>Form</b>	25 mM Tris HCl, pH 7.3, 100 mM glycine, 10% glycerol.
<b>Molecular Mass</b>	41.8 kDa
<b>AA Sequence</b>	MNWHLPLFLLASVTLPSICSHFNPLSLEELGSNTGIQVFNQIVKSRPHDNIVISPHGIA SVLGMLQLGAD GRTKKQLAMVMRYGVNGVVGKILKKINKAIVSKKNKDIVTVANAVFV KNASEIEVPFVTRNKDVFQCEVRN VNFEDPASACDSINAWVKNETRDMIDNLLSPD LIDGVLTRLVLVNAVYFKGLWKSRLFQNPENTKKRTFVAA DGKSYQVPMLAQLSVFRC GSTSAPNDLWYNFIELPHYHGESISMLIALPTESSTPLSAIIPHISTKTIDSW MSIMVPKR VQVILPKFTAQAQDLKEPLKVLGITDMFDSSKANFAKITTGSENLHVSHILQKAKIEV SED

 Tel: 1-631-559-9269    1-516-512-3133

 Email: [info@creative-biomart.com](mailto:info@creative-biomart.com)     Fax: 1-631-938-8127

 45-1 Ramsey Road, Shirley, NY 11967, USA

GTKASAATTAILIARSSPPWFIVDRPFLFFIRHNPTGAVLFMGQINKPTRTRTRPLEQKLIS  
EEDLAANDILDYKDDDDKV

<b>Purity</b>	> 80% as determined by SDS-PAGE and Coomassie blue staining.
<b>Stability</b>	Stable for 12 months from the date of receipt of the product under proper storage and handling conditions. Avoid repeated freeze-thaw cycles.
<b>Storage</b>	Store at -80 centigrade.
<b>Concentration</b>	>50 ug/mL as determined by microplate BCA method.
<b>Preparation</b>	Recombinant protein was captured through anti-DDK affinity column followed by conventional chromatography steps.
<b>Protein Families</b>	Druggable Genome, Secreted Protein
<b>Full Length</b>	Full L.

## GENE INFORMATION

<b>Gene Name</b>	SERPINE2 serpin family E member 2 [ Homo sapiens (human) ]
<b>Official Symbol</b>	SERPINE2
<b>Synonyms</b>	GDN; PI7; PN1; PNI; PI-7; PN-1; GDNPF
<b>Gene ID</b>	5270
<b>mRNA Refseq</b>	NM_006216.4

 Tel: 1-631-559-9269 1-516-512-3133

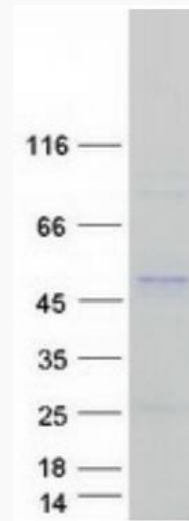
 Email: [info@creative-biomart.com](mailto:info@creative-biomart.com)  Fax: 1-631-938-8127

 45-1 Ramsey Road, Shirley, NY 11967, USA

**Protein Refseq** NP\_006207.1

**MIM** 177010

**UniProt ID** P07093



Coomassie blue staining of purified SERPINE2 protein.

 Tel: 1-631-559-9269 1-516-512-3133

 Email: [info@creative-biomart.com](mailto:info@creative-biomart.com)  Fax: 1-631-938-8127

 45-1 Ramsey Road, Shirley, NY 11967, USA