

Recombinant Human SERPINE2 protein, His-tagged

Cat. No. SERPINE2-187H **Lot. No.** (See product label)

SPECIFICATION

Product Overview	Recombinant Human SERPINE2 (Ser20-Pro397) protein was fused to His-tag at C-terminus and expressed in human 293 cells (HEK293).
Species	Human
Source	HEK293
ProteinLength	Ser20-Pro397
Description	SERPINE2 is also known as Glia-derived nexin (GDN), Peptidase inhibitor 7 (PI7), Protease nexin 1(PN1). SERPINE2 is a secreted glycoprotein which belongs to the serpin family. SerpinE1 is the primary physiological inhibitor of the two plasminogen activators urokinase (uPA) and tissue plasminogen activator (tPA). PAI-1/GDN is also implicated in adipose tissue development. It suggests that PAI-1 inhibitors serve in the control of atherothrombosis. Defects in Serpin E1/PN1 are the cause of plasminogen activator inhibitor-1 deficiency (PAI-1 deficiency) which is characterized by abnormal bleeding due to SerpinE1 defect in the plasma.
Predicted N Terminal	Ser20
Form	Lyophilized from 0.22 µm filtered solution in 20 mM Sodium Acetate, 100 mM NaCl, pH6.5, 10% trehalose.
Molecular Mass	The protein has a calculated MW of 42.7 kDa. The protein migrates as 45-48 kDa under reducing (R) condition (SDS-PAGE) due to glycosylation.

 Tel: 1-631-559-9269 1-516-512-3133

 Email: info@creative-biomart.com  Fax: 1-631-938-8127

 45-1 Ramsey Road, Shirley, NY 11967, USA

Endotoxin	Less than 1.0 EU per µg by the LAL method.
Purity	>92% as determined by SDS-PAGE.
Storage	<p>For long term storage, the product should be stored at lyophilized state at -20 centigrade or lower.</p> <p>Please avoid repeated freeze-thaw cycles.</p> <p>This product is stable after storage at:</p> <p>-20 to -70 centigrade for 12 months in lyophilized state; -70 centigrade for 3 months under sterile conditions after reconstitution.</p>
Reconstitution	It is recommended that sterile water be added to the vial to prepare a stock solution of 0.2 ug/ul. Centrifuge the vial at 4°C before opening to recover the entire contents.

GENE INFORMATION

Gene Name	SERPINE2
Official Symbol	SERPINE2
Synonyms	SERPINE2; serpin peptidase inhibitor, clade E (nexin, plasminogen activator inhibitor type 1), member 2; PI7, serine (or cysteine) proteinase inhibitor, clade E (nexin, plasminogen activator inhibitor type 1), member 2; glia-derived nexin; GDN; glial derived nexin 1; nexin; PN1; PNI; serpin E2; protease nexin I; peptidase inhibitor 7; glial-derived neurite promoting factor; PI7; PI-7; PN-1; DKFZp686A13110
Gene ID	5270
mRNA Refseq	NM_001136528
Protein Refseq	NP_001130000

 Tel: 1-631-559-9269 1-516-512-3133

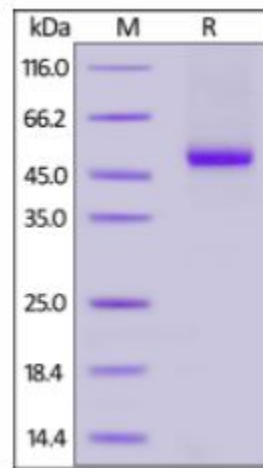
 Email: info@creative-biomart.com  Fax: 1-631-938-8127

 45-1 Ramsey Road, Shirley, NY 11967, USA

MIM 177010

UniProt ID P07093

**SDS-PAGE of
SERPINE2-187H**



Human Serpin E2, His Tag on SDS-PAGE under reducing (R) condition. The gel was stained overnight with Coomassie Blue. The purity of the protein is greater than 92%.

Tel: 1-631-559-9269 1-516-512-3133

Email: info@creative-biomart.com Fax: 1-631-938-8127

45-1 Ramsey Road, Shirley, NY 11967, USA