

## Recombinant Human SERPINE2 protein, His & T7-tagged

Cat. No. SERPINE2-8004H Lot. No. (See product label)

### SPECIFICATION

|                         |   |
|-------------------------|---|
| <b>Product Overview</b> | Recombinant Human SERPINE2 aa. (Ser20~Pro398 (Accession # P07093)) fused with N-terminal His & T7 tag was produced in E. coli cells.  |
| <b>Species</b>          | Human   |
| <b>Source</b>           | E.coli  |
| <b>ProteinLength</b>    | Ser20~Pro398  |
| <b>Description</b>      | This gene encodes a member of the serpin family of proteins, a group of proteins that inhibit serine proteases. Thrombin, urokinase, plasmin and trypsin are among the proteases that this family member can inhibit. This gene is a susceptibility gene for chronic obstructive pulmonary disease and for emphysema. Alternative splicing results in multiple transcript variants. |
| <b>Form</b>             | Freeze-dried powder   |
| <b>Molecular Mass</b>   | Predicted Molecular Mass: 45.7kDa   |
| <b>Endotoxin</b>        | <1.0EU per 1ug (determined by the LAL method)   |
| <b>Purity</b>           | >95%  |
| <b>Characteristic</b>   | The isoelectric point is 9.4.   |

 Tel: 1-631-559-9269 1-516-512-3133

 Email: [info@creative-biomart.com](mailto:info@creative-biomart.com)  Fax: 1-631-938-8127

 45-1 Ramsey Road, Shirley, NY 11967, USA

|                       |   |
|-----------------------|---|
| <b>Applications</b>   | SDS-PAGE; WB; ELISA; IP   |
| <b>Stability</b>      | The thermal stability is described by the loss rate of the target protein. The loss rate was determined by accelerated thermal degradation test, that is, incubate the protein at 37°C for 48h, and no obvious degradation and precipitation were observed. (Referring from China Biological Products Standard, which was calculated by the Arrhenius equation.) The loss of this protein is less than 5% within the expiration date under appropriate storage condition. |
| <b>Storage</b>        | Avoid repeated freeze/thaw cycles. Store at 2-8°C for one month. Aliquot and store at -80°C for 12 months.  |
| <b>Storage Buffer</b> | Supplied as lyophilized form in PBS, pH7.4, containing 5% trehalose, 0.01% sarcosyl.  |
| <b>Reconstitution</b> | Reconstitute in sterile PBS, pH7.2-pH7.4.   |

## GENE INFORMATION

|                        |  |
|------------------------|--|
| <b>Gene Name</b>       | SERPINE2 serpin family E member 2 [ Homo sapiens (human) ]   |
| <b>Official Symbol</b> | SERPINE2   |
| <b>Synonyms</b>        | SERPINE2; serpin family E member 2; GDN; PI7; PN1; PNI; PI-7; PN-1; GDNPF; glia-derived nexin; glial-derived neurite promoting factor; peptidase inhibitor 7; protease nexin I; serpin E2; serpin peptidase inhibitor, clade E (nexin, plasminogen activator inhibitor type 1), member 2 |
| <b>Gene ID</b>         | 5270   |
| <b>mRNA Refseq</b>     | NM_001136528.1   |

 Tel: 1-631-559-9269 1-516-512-3133

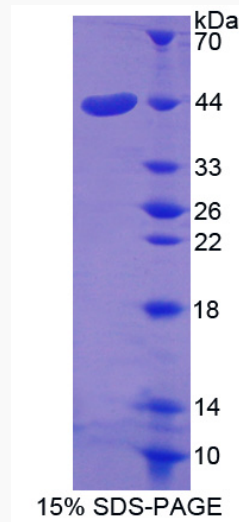
 Email: [info@creative-biomart.com](mailto:info@creative-biomart.com)  Fax: 1-631-938-8127

 45-1 Ramsey Road, Shirley, NY 11967, USA

**Protein Refseq** NP\_001130000.1

**UniProt ID** P07093

**SDS-PAGE**



 Tel: 1-631-559-9269 1-516-512-3133

 Email: [info@creative-biomart.com](mailto:info@creative-biomart.com)  Fax: 1-631-938-8127

 45-1 Ramsey Road, Shirley, NY 11967, USA