

Recombinant Human SERPINF2 protein, His-tagged

Cat. No. SERPINF2-1254H Lot. No. (See product label)

SPECIFICATION

Product Overview	Recombinant Human SERPINF2 protein(Asn581~Asn738), fused with N-terminal His Tag, was expressed in HEK293.
Species	Human
Source	HEK293
ProteinLength	Asn581~Asn738
Form	PBS, pH7.4, containing 0.01% SKL, 1mM DTT, 5% Trehalose and Proclin300.
Molecular Mass	50kDa
Endotoxin	<1.0EU per 1g (determined by the LAL method)
Purity	> 95%
Storage	Avoid repeated freeze/thaw cycles. Store at 2-8°C for one month. Aliquot and store at -80°C for 12 months.
Reconstitution	Reconstitute in 10mM PBS (pH7.4) to a concentration of 0.1-1.0 mg/mL. Do not vortex.

GENE INFORMATION

 Tel: 1-631-559-9269 1-516-512-3133

 Email: info@creative-biomart.com  Fax: 1-631-938-8127

 45-1 Ramsey Road, Shirley, NY 11967, USA

Gene Name	SERPINF2 serpin peptidase inhibitor, clade F (alpha-2 antiplasmin, pigment epithelium derived factor), member 2 [Homo sapiens]
Official Symbol	SERPINF2
Synonyms	SERPINF2; serpin peptidase inhibitor, clade F (alpha-2 antiplasmin, pigment epithelium derived factor), member 2; PLI, serine (or cysteine) proteinase inhibitor, clade F (alpha 2 antiplasmin, pigment epithelium derived factor), member 2; alpha-2-antiplasmin; A2AP; AAP; alpha 2 antiplasmin; ALPHA 2 PI; alpha 2 plasmin inhibitor; API; serpin F2; alpha-2-AP; alpha-2-plasmin inhibitor; serine (or cysteine) proteinase inhibitor, clade F (alpha-2 antiplasmin, pigment epithelium derived factor), member 2; PLI; ALPHA-2-PI;
Gene ID	5345
mRNA Refseq	NM_000934
Protein Refseq	NP_000925
MIM	613168
UniProt ID	P08697

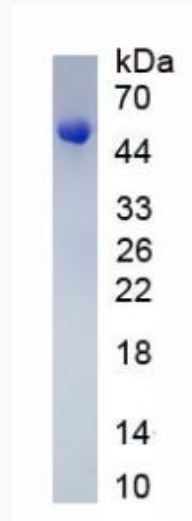
 Tel: 1-631-559-9269 1-516-512-3133

 Email: info@creative-biomart.com  Fax: 1-631-938-8127

 45-1 Ramsey Road, Shirley, NY 11967, USA



SDS-PAGE



Tel: 1-631-559-9269 1-516-512-3133

Email: info@creative-biomart.com Fax: 1-631-938-8127

45-1 Ramsey Road, Shirley, NY 11967, USA