

## Recombinant Human SERPINF2 protein, His-tagged

**Cat. No.** SERPINF2-2670H    **Lot. No.** (See product label)

### SPECIFICATION

<b>Product Overview</b>	Recombinant Human SERPINF2 protein(P08697-1)(Met28-Lys491), fused with C-terminal His tag, was expressed in HEK293.
<b>Species</b>	Human
<b>Source</b>	HEK293
<b>ProteinLength</b>	Met28-Lys491
<b>Tag</b>	C-His
<b>Form</b>	Supplied as 0.22µm filtered solution in PBS (pH 7.4).
<b>Bio-activity</b>	Immobilized Human SERPINF2, His Tag at 5ug/ml (100ul/well) on the plate. Dose response curve for Anti-SERPINF2 Antibody, hFc Tag with the EC50 of 45.9ng/ml determined by ELISA.
<b>Molecular Mass</b>	The protein has a predicted MW of 52.9 kDa. Due to glycosylation, the protein migrates to 60-70 kDa based on Tris-Bis PAGE result.
<b>Endotoxin</b>	Less than 1EU per µg by the LAL method.
<b>Purity</b>	> 95% as determined by Tris-Bis PAGE;> 95% as determined by HPLC
<b>Storage</b>	Valid for 12 months from date of receipt when stored at -80°C. Recommend to aliquot

 Tel: 1-631-559-9269    1-516-512-3133

 Email: [info@creative-biomart.com](mailto:info@creative-biomart.com)     Fax: 1-631-938-8127

 45-1 Ramsey Road, Shirley, NY 11967, USA

the protein into smaller quantities for optimal storage. Please do not repeated freeze-thaw cycles.

**Reconstitution**

It is recommended that sterile water be added to the vial to prepare a stock solution of 0.2 ug/ul. Centrifuge the vial at 4°C before opening to recover the entire contents.

## GENE INFORMATION

**Gene Name**

SERPINF2 serpin peptidase inhibitor, clade F (alpha-2 antiplasmin, pigment epithelium derived factor), member 2 [ Homo sapiens ]

**Official Symbol**

SERPINF2

**Synonyms**

SERPINF2; serpin peptidase inhibitor, clade F (alpha-2 antiplasmin, pigment epithelium derived factor), member 2; PLI, serine (or cysteine) proteinase inhibitor, clade F (alpha 2 antiplasmin, pigment epithelium derived factor), member 2; alpha-2-antiplasmin; A2AP; AAP; alpha 2 antiplasmin; ALPHA 2 PI; alpha 2 plasmin inhibitor; API; serpin F2; alpha-2-AP; alpha-2-plasmin inhibitor; serine (or cysteine) proteinase inhibitor, clade F (alpha-2 antiplasmin, pigment epithelium derived factor), member 2; PLI; ALPHA-2-PI;

**Gene ID**

5345

**mRNA Refseq**

NM\_000934

**Protein Refseq**

NP\_000925

**MIM**

613168

**UniProt ID**

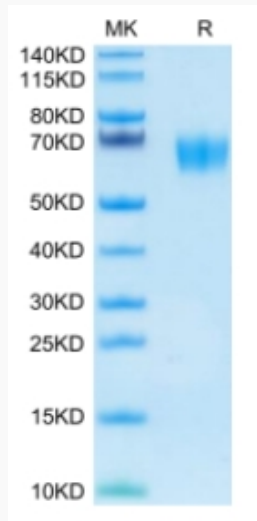
P08697

 Tel: 1-631-559-9269 1-516-512-3133

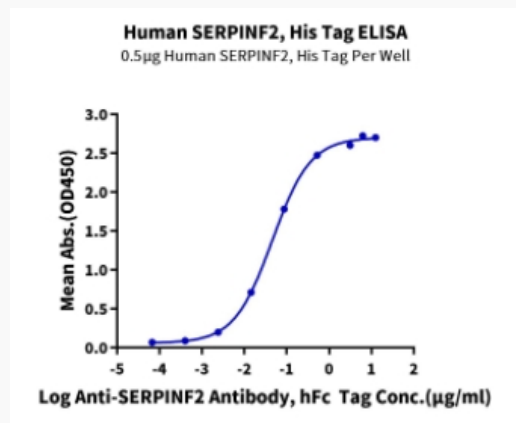
 Email: [info@creative-biomart.com](mailto:info@creative-biomart.com)  Fax: 1-631-938-8127

 45-1 Ramsey Road, Shirley, NY 11967, USA

**Tris-Bis PAGE**



**ELISA Data**



 Tel: 1-631-559-9269 1-516-512-3133

 Email: [info@creative-biomart.com](mailto:info@creative-biomart.com)  Fax: 1-631-938-8127

 45-1 Ramsey Road, Shirley, NY 11967, USA