

# Recombinant Human SERPINF2 Protein, Myc/DDK-tagged, C13 and N15-labeled

**Cat. No.** SERPINF2-3243H    **Lot. No.** (See product label)

## SPECIFICATION

### Product Overview

SERPINF2 MS Standard C13 and N15-labeled recombinant protein (NP\_000925) with a C-terminal MYC/DDK tag, was expressed in HEK293 cells.

### Species

Human

### Source

HEK293

### Description

This gene encodes a member of the serpin family of serine protease inhibitors. The protein is a major inhibitor of plasmin, which degrades fibrin and various other proteins. Consequently, the proper function of this gene has a major role in regulating the blood clotting pathway. Mutations in this gene result in alpha-2-plasmin inhibitor deficiency, which is characterized by severe hemorrhagic diathesis. Multiple transcript variants encoding different isoforms have been found for this gene.

### Molecular Mass

54.6 kDa

### AA Sequence

MVLLWGLLVLSWSCSQGPCSVFSPVSAMEPLGRQLTSGPNQEQVSPLTLLKLGNQ  
 EPGGQTALKSPPGVCSRDPTEQTHRLARAMMAFTADLFSLVAQTSTCPNLILSPLS  
 VALALSHLALGAQNHTLQRLQQVLHAGSGPCPLHLLSRLCQDLGPGAFRLAARMYL  
 QKGFPIKEDFLEQSEQLFGAKPVSLTGKQEDDLANINQWVKEATEGKIQEFLSGLPE  
 DTVLLLLNAIHFGGFWRNKFDPSLTQRDSFHLDEQFTVPVEMMQARTYPLRWFLLE  
 QPEIQVAHFPPKNNMSFVVLVPTHFEWNVSQVLANLSWDTLHPPLVWERPTKVRLP  
 KLYLKHQMDLVATLSQLGLQELFQAPDLRGISEQSLVSGVQHQSTLELSEVGVEAA

 Tel: 1-631-559-9269    1-516-512-3133

 Email: [info@creative-biomart.com](mailto:info@creative-biomart.com)     Fax: 1-631-938-8127

 45-1 Ramsey Road, Shirley, NY 11967, USA



AATSIAMSRMSLSSFSVNRPFLLFFIFEDTTGLPLFVGSVRNPNSAPRELKEQQDSP  
GNKDFLQSLKGFPRGDKLFGPDLKLVPPMEEDYPQFGSPKTRTRPLEQKLISEEDLA  
ANDILDYKDDDDKV

**Purity** > 80% as determined by SDS-PAGE and Coomassie blue staining

**Stability** Stable for 3 months from receipt of products under proper storage and handling conditions.

**Storage** Store at -80 centigrade. Avoid repeated freeze-thaw cycles.

**Concentration** 50 µg/mL as determined by BCA

**Storage Buffer** 100 mM glycine, 25 mM Tris-HCl, pH 7.3.

## GENE INFORMATION

**Gene Name** SERPINF2 serpin family F member 2 [ Homo sapiens (human) ]

**Official Symbol** SERPINF2

**Synonyms** SERPINF2; serpin peptidase inhibitor, clade F (alpha-2 antiplasmin, pigment epithelium derived factor), member 2; PLI, serine (or cysteine) proteinase inhibitor, clade F (alpha 2 antiplasmin, pigment epithelium derived factor), member 2; alpha-2-antiplasmin; A2AP; AAP; alpha 2 antiplasmin; ALPHA 2 PI; alpha 2 plasmin inhibitor; API; serpin F2; alpha-2-AP; alpha-2-plasmin inhibitor; serine (or cysteine) proteinase inhibitor, clade F (alpha-2 antiplasmin, pigment epithelium derived factor), member 2; PLI; ALPHA-2-PI;

**Gene ID** 5345

Tel: 1-631-559-9269 1-516-512-3133

Email: [info@creative-biomart.com](mailto:info@creative-biomart.com) Fax: 1-631-938-8127

45-1 Ramsey Road, Shirley, NY 11967, USA

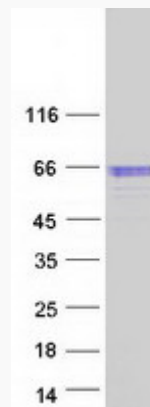
mRNA Refseq [NM\\_000934](#)

Protein Refseq [NP\\_000925](#)

MIM [613168](#)

UniProt ID [P08697](#)

SDS-PAGE



 Tel: 1-631-559-9269 1-516-512-3133

 Email: [info@creative-biomart.com](mailto:info@creative-biomart.com)  Fax: 1-631-938-8127

 45-1 Ramsey Road, Shirley, NY 11967, USA