

Recombinant Human SERPINF2 protein, rFc-tagged

Cat. No. SERPINF2-3669H Lot. No. (See product label)

SPECIFICATION

Product Overview	Recombinant Human SERPINF2 protein(P08697-1)(Met28-Lys491), fused with C-terminal rFc tag, was expressed in HEK293.
Species	Human
Source	HEK293
Form	Lyophilized from 0.22 µm filtered solution in PBS, pH 7.4. Normally 5% trehalose and 5% mannitol are added as protectants before lyophilization.
Molecular Mass	77.8 kDa
Endotoxin	<0.1 EU/µg protein, LAL method
Purity	>90 %, SDS-PAGE
Storage	It is recommended that the protein be aliquoted for optimal storage. Avoid repeated freeze-thaw cycles. Until expiry date, -20°C to -80°C as lyophilized proteins. 3 months, -20°C to -80°C under sterile conditions after reconstitution.
Reconstitution	Briefly centrifuge the tube before opening. Reconstitute at 0.1-0.5 mg/mL in sterile water.

GENE INFORMATION

 Tel: 1-631-559-9269 1-516-512-3133

 Email: info@creative-biomart.com  Fax: 1-631-938-8127

 45-1 Ramsey Road, Shirley, NY 11967, USA

Gene Name	SERPINF2 serpin peptidase inhibitor, clade F (alpha-2 antiplasmin, pigment epithelium derived factor), member 2 [Homo sapiens]
Official Symbol	SERPINF2
Synonyms	SERPINF2; serpin peptidase inhibitor, clade F (alpha-2 antiplasmin, pigment epithelium derived factor), member 2; PLI, serine (or cysteine) proteinase inhibitor, clade F (alpha 2 antiplasmin, pigment epithelium derived factor), member 2; alpha-2-antiplasmin; A2AP; AAP; alpha 2 antiplasmin; ALPHA 2 PI; alpha 2 plasmin inhibitor; API; serpin F2; alpha-2-AP; alpha-2-plasmin inhibitor; serine (or cysteine) proteinase inhibitor, clade F (alpha-2 antiplasmin, pigment epithelium derived factor), member 2; PLI; ALPHA-2-PI;
Gene ID	5345
mRNA Refseq	NM_000934
Protein Refseq	NP_000925
MIM	613168
UniProt ID	P08697

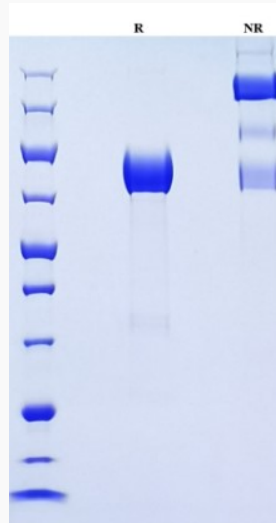
 Tel: 1-631-559-9269 1-516-512-3133

 Email: info@creative-biomart.com  Fax: 1-631-938-8127

 45-1 Ramsey Road, Shirley, NY 11967, USA



SDS-PAGE



Tel: 1-631-559-9269 1-516-512-3133

Email: info@creative-biomart.com Fax: 1-631-938-8127

45-1 Ramsey Road, Shirley, NY 11967, USA