

Recombinant Rabbit SERPINF2 Protein, His-tagged

Cat. No. SERPINF2-397R Lot. No. (See product label)

SPECIFICATION

Product Overview	Recombinant Rabbit SERPINF2 Protein (Met28-Lys491) with N-His tag was expressed in E. coli.
Species	Rabbit
Source	E.coli
ProteinLength	Met28-Lys491
Description	This gene encodes a member of the serpin family of serine protease inhibitors. The protein is a major inhibitor of plasmin, which degrades fibrin and various other proteins. Consequently, the proper function of this gene has a major role in regulating the blood clotting pathway. Mutations in this gene result in alpha-2-plasmin inhibitor deficiency, which is characterized by severe hemorrhagic diathesis. Multiple transcript variants encoding different isoforms have been found for this gene.
Form	Freeze-dried powder
Molecular Mass	Predicted Molecular Mass: 57.7 kDa Accurate Molecular Mass: 60 kDa
Purity	> 95%
Applications	Positive Control; Immunogen; SDS-PAGE; WB.

 Tel: 1-631-559-9269 1-516-512-3133

 Email: info@creative-biomart.com  Fax: 1-631-938-8127

 45-1 Ramsey Road, Shirley, NY 11967, USA

Stability	The thermal stability is described by the loss rate. The loss rate was determined by accelerated thermal degradation test, that is, incubate the protein at 37 centigrade for 48h, and no obvious degradation and precipitation were observed. The loss rate is less than 5% within the expiration date under appropriate storage condition.
Storage	Avoid repeated freeze/thaw cycles. Store at 2-8 centigrade for one month. Aliquot and store at -80 centigrade for 12 months.
Storage Buffer	20mM Tris, 150mM NaCl, pH8.0, containing 1mM EDTA, 1mM DTT, 0.01% SKL, 5% Trehalose and Proclin300.
Reconstitution	Reconstitute in sterile water to a concentration of 0.1-1.0 mg/mL. Do not vortex.

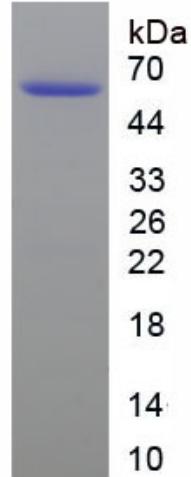
GENE INFORMATION

Gene Name	SERPINF2 serpin family F member 2 [<i>Oryctolagus cuniculus</i> (rabbit)]
Official Symbol	SERPINF2
Synonyms	SERPINF2; serpin family F member 2; serpin; alpha-2-antiplasmin; alpha-2-PI serine protease inhibitor; alpha-2-plasmin inhibitor; serpin peptidase inhibitor, clade F (alpha-2 antiplasmin, pigment epithelium derived factor), member 2
Gene ID	100009515
mRNA Refseq	NM_001082741
Protein Refseq	NP_001076210
UniProt ID	Q45GR2

 Tel: 1-631-559-9269 1-516-512-3133

 Email: info@creative-biomart.com  Fax: 1-631-938-8127

 45-1 Ramsey Road, Shirley, NY 11967, USA



Tel: 1-631-559-9269 1-516-512-3133

Email: info@creative-biomart.com Fax: 1-631-938-8127

45-1 Ramsey Road, Shirley, NY 11967, USA