

Recombinant Human SERPING1 Protein, His-tagged

Cat. No. SERPING1-280H Lot. No. (See product label)

SPECIFICATION

Product Overview	Recombinant Human SERPING1(Pro399~Ala500) fused with His tag at N-terminal was expressed in E. coli.
Species	Human
Source	E.coli
ProteinLength	Pro399~Ala500
Description	This gene encodes a highly glycosylated plasma protein involved in the regulation of the complement cascade. Its protein inhibits activated C1r and C1s of the first complement component and thus regulates complement activation. Deficiency of this protein is associated with hereditary angioneurotic oedema (HANE). Alternative splicing results in multiple transcript variants encoding the same isoform.
Form	PBS, pH7.4, containing 0.01% SKL, 1mM DTT, 5% Trehalose and Proclin300.
Molecular Mass	17.0kDa
Identity	Reconstitute in PBS or others
Endotoxin	<1.0EU per 1g (determined by the LAL method)
Purity	> 95%

 Tel: 1-631-559-9269 1-516-512-3133

 Email: info@creative-biomart.com  Fax: 1-631-938-8127

 45-1 Ramsey Road, Shirley, NY 11967, USA

Applications	Positive Control; Immunogen; SDS-PAGE; WB. If bio-activity of the protein is needed, please check active protein
Stability	The thermal stability is described by the loss rate. The loss rate was determined by accelerated thermal degradation test, that is, incubate the protein at 37 centigrade for 48h, and no obvious degradation and precipitation were observed. The loss rate is less than 5% within the expiration date under appropriate storage condition.
Storage	Avoid repeated freeze/thaw cycles. Store at 2-8 centigrade for one month. Aliquot and store at -80 centigrade for 12 months.
Reconstitution	Reconstitute in PBS or others
GENE INFORMATION	
Gene Name	SERPING1 serpin peptidase inhibitor, clade G (C1 inhibitor), member 1 [Homo sapiens]
Official Symbol	SERPING1
Synonyms	SERPING1; serpin peptidase inhibitor, clade G (C1 inhibitor), member 1; C1NH, serine (or cysteine) proteinase inhibitor, clade G (C1 inhibitor), member 1, (angioedema, hereditary); plasma protease C1 inhibitor; angioedema; hereditary; C1 INH; C1IN; HAE1; HAE2; serpin G1; C1-inhibiting factor; C1 esterase inhibitor; complement component 1 inhibitor; serine/cysteine proteinase inhibitor clade G member 1; C1NH; C1INH;
Gene ID	710
mRNA Refseq	NM_000062

 Tel: 1-631-559-9269 1-516-512-3133

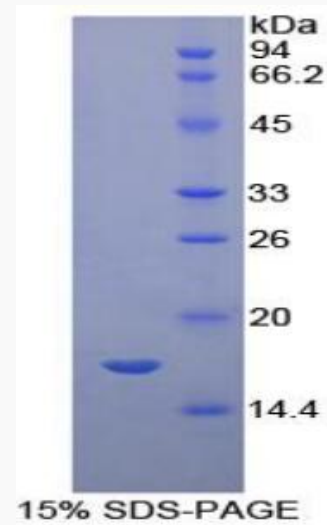
 Email: info@creative-biomart.com  Fax: 1-631-938-8127

 45-1 Ramsey Road, Shirley, NY 11967, USA

Protein Refseq NP_000053

MIM 606860

UniProt ID P05155



 Tel: 1-631-559-9269 1-516-512-3133

 Email: info@creative-biomart.com  Fax: 1-631-938-8127

 45-1 Ramsey Road, Shirley, NY 11967, USA