

Recombinant Human SERPING1 Protein (Pro399-Ala500), His tagged

Cat. No. SERPING1-5140H **Lot. No.** (See product label)

SPECIFICATION

Product Overview	Recombinant human SERPING1 (Pro399-Ala500) fused with His tag was expressed in E. coli.
Species	Human
Source	E.coli
ProteinLength	Pro399-Ala500
Description	Activation of the C1 complex is under control of the C1-inhibitor. It forms a proteolytically inactive stoichiometric complex with the C1r or C1s proteases. May play a potentially crucial role in regulating important physiological pathways including complement activation, blood coagulation, fibrinolysis and the generation of kinins. Very efficient inhibitor of FXIIa. Inhibits chymotrypsin and kallikrein.
Form	Lyophilized powder/frozen liquid
Molecular Mass	13.55 kDa
Purity	>90% as determined by SDS-PAGE.
Notes	For research use only.
Storage	Use a manual defrost freezer and avoid repeated freeze thaw cycles. Store at 2 to 8

 Tel: 1-631-559-9269 1-516-512-3133

 Email: info@creative-biomart.com  Fax: 1-631-938-8127

 45-1 Ramsey Road, Shirley, NY 11967, USA

centigrade for one week. Store at -20 to -80 centigrade for twelve months from the date of receipt.

Storage Buffer Supplied as solution form in PBS, pH 7.5 or lyophilized from PBS, pH 7.5.

Reconstitution Reconstitute in sterile water for a stock solution.

Shipping They are shipped out with dry ice/blue ice unless customers require otherwise.

GENE INFORMATION

Gene Name [SERPING1 serpin peptidase inhibitor, clade G \(C1 inhibitor\), member 1 \[Homo sapiens \(human\) \]](#)

Official Symbol [SERPING1](#)

Synonyms

SERPING1; serpin peptidase inhibitor, clade G (C1 inhibitor), member 1; C1NH, serine (or cysteine) proteinase inhibitor, clade G (C1 inhibitor), member 1, (angioedema, hereditary); plasma protease C1 inhibitor; angioedema; hereditary; C1 INH; C1IN; HAE1; HAE2; serpin G1; C1-inhibiting factor; C1 esterase inhibitor; complement component 1 inhibitor; serine/cysteine proteinase inhibitor clade G member 1; C1NH; C1INH;

Gene ID [710](#)

mRNA Refseq [NM_000062](#)

Protein Refseq [NP_000053](#)

MIM [606860](#)

 Tel: 1-631-559-9269 1-516-512-3133

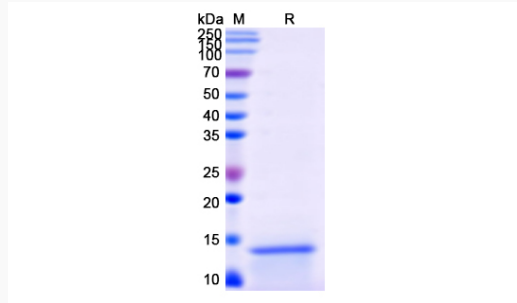
 Email: info@creative-biomart.com  Fax: 1-631-938-8127

 45-1 Ramsey Road, Shirley, NY 11967, USA

UniProt ID

P05155

SDS-PAGE



 Tel: 1-631-559-9269 1-516-512-3133

 Email: info@creative-biomart.com  Fax: 1-631-938-8127

 45-1 Ramsey Road, Shirley, NY 11967, USA