

Recombinant Human SERPING1 Protein, Myc/DDK-tagged, C13 and N15-labeled

Cat. No. SERPING1-5874H Lot. No. (See product label)

SPECIFICATION

Product Overview	SERPING1 MS Standard C13 and N15-labeled recombinant protein (NP_000053) with a C-terminal MYC/DDK tag, was expressed in HEK293 cells.
Species	Human
Source	HEK293
Description	This gene encodes a highly glycosylated plasma protein involved in the regulation of the complement cascade. Its encoded protein, C1 inhibitor, inhibits activated C1r and C1s of the first complement component and thus regulates complement activation. It is synthesized in the liver, and its deficiency is associated with hereditary angioneurotic oedema (HANE). Alternative splicing results in multiple transcript variants encoding the same isoform.
Molecular Mass	55.2 kDa
AA Sequence	MASRLTLLTLLLLLAGDRASSNPATSSSSQDPESLQDRGEGKVATTVISKMLFVE PILEVSSLPTTNSTTNSATKITANTTDEPTTQPTTEPTTQPTIQPTQPTTQLPTDSPTQ PTTGSFCPGPVTLCSDLESHSTEAVLGDALVDFSLKLYHAFSAMKKVETNMAFSPFS IASLLTQVLLGAGENTKTNLESILSYPKDFTCVHQALKGFTTKGVTSVSQIFHSPDLAI RDTFVNASRTLYSSSPRVLSNNSDANLELINTWVAKNTNKNISRLLDLPSDTRLVLL NAIYLSAKWKTTTDPKKTREMPFHFKNVSVIKVPMMNSSKKYPVAHFIDQTLKAKVGQL QLSHNLSLVILVPQNLKHRLEDMEQALSPSVFKAIMEKLEMSKFQPTLLLPRIKVTTSS

 Tel: 1-631-559-9269 1-516-512-3133

 Email: info@creative-biomart.com  Fax: 1-631-938-8127

 45-1 Ramsey Road, Shirley, NY 11967, USA

QDMLSIMEKLEFFDFSFDLNLCLGLTEDPDLQVSAMQHQTVLELTETGVEAAAASAI
 VARTLLVFEVQQPFLFMLWDQQHKFPVFMGRVYDPRATRTRPLEQKLISEEDLAAN
 DILDYKDDDDKV

Purity > 80% as determined by SDS-PAGE and Coomassie blue staining

Stability Stable for 3 months from receipt of products under proper storage and handling conditions.

Storage Store at -80 centigrade. Avoid repeated freeze-thaw cycles.

Concentration 50 µg/mL as determined by BCA

Storage Buffer 100 mM glycine, 25 mM Tris-HCl, pH 7.3.

GENE INFORMATION

Gene Name [SERPING1 serpin family G member 1 \[Homo sapiens \(human\) \]](#)

Official Symbol [SERPING1](#)

Synonyms SERPING1; serpin peptidase inhibitor, clade G (C1 inhibitor), member 1; C1NH, serine (or cysteine) proteinase inhibitor, clade G (C1 inhibitor), member 1, (angioedema, hereditary); plasma protease C1 inhibitor; angioedema; hereditary; C1 INH; C1IN; HAE1; HAE2; serpin G1; C1-inhibiting factor; C1 esterase inhibitor; complement component 1 inhibitor; serine/cysteine proteinase inhibitor clade G member 1; C1NH; C1INH;

Gene ID [710](#)

mRNA Refseq [NM_000062](#)

 Tel: 1-631-559-9269 1-516-512-3133

 Email: info@creative-biomart.com  Fax: 1-631-938-8127

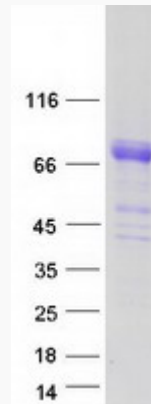
 45-1 Ramsey Road, Shirley, NY 11967, USA

Protein Refseq NP_000053

MIM 606860

UniProt ID P05155

SDS-PAGE



 Tel: 1-631-559-9269 1-516-512-3133

 Email: info@creative-biomart.com  Fax: 1-631-938-8127

 45-1 Ramsey Road, Shirley, NY 11967, USA