

Recombinant Human SERPING1 Protein (Asn23-Ala500), C-His tagged

Cat. No. SERPING1-6463H Lot. No. (See product label)

SPECIFICATION

Product Overview	Recombinant human SERPING1 (Asn23-Ala500) fused with the C-terminal His tag was expressed in mammalian cells.
Species	Human
Source	Mammalian Cells
ProteinLength	Asn23-Ala500
Form	Lyophilized powder/frozen liquid
Molecular Mass	52.69 kDa
Purity	> 90 % as determined by SDS-PAGE
Notes	For research use only.
Storage	Use a manual defrost freezer and avoid repeated freeze thaw cycles. Store at 2 to 8 centigrade for one week. Store at -20 to -80 centigrade for twelve months from the date of receipt.
Storage Buffer	Supplied as solution form in PBS or lyophilized from PBS.
Reconstitution	Reconstitute in sterile water for a stock solution.

 Tel: 1-631-559-9269 1-516-512-3133

 Email: info@creative-biomart.com  Fax: 1-631-938-8127

 45-1 Ramsey Road, Shirley, NY 11967, USA

Shipping They are shipped out with dry ice/blue ice unless customers require otherwise.

GENE INFORMATION

Gene Name SERPING1 serpin peptidase inhibitor, clade G (C1 inhibitor), member 1 [Homo sapiens (human)]

Official Symbol SERPING1

Synonyms SERPING1; serpin peptidase inhibitor, clade G (C1 inhibitor), member 1; C1NH, serine (or cysteine) proteinase inhibitor, clade G (C1 inhibitor), member 1, (angioedema, hereditary); plasma protease C1 inhibitor; angioedema; hereditary; C1 INH; C1IN; HAE1; HAE2; serpin G1; C1-inhibiting factor; C1 esterase inhibitor; complement component 1 inhibitor; serine/cysteine proteinase inhibitor clade G member 1; C1NH; C1INH;

Gene ID 710

mRNA Refseq NM_000062

Protein Refseq NP_000053

MIM 606860

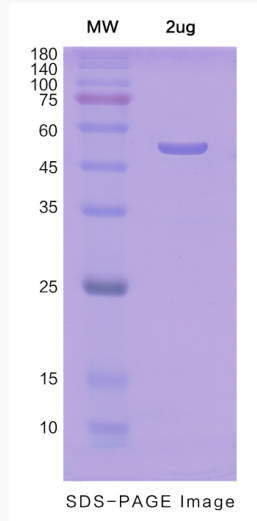
UniProt ID P05155

 Tel: 1-631-559-9269 1-516-512-3133

 Email: info@creative-biomart.com  Fax: 1-631-938-8127

 45-1 Ramsey Road, Shirley, NY 11967, USA

SDS-PAGE



 Tel: 1-631-559-9269 1-516-512-3133

 Email: info@creative-biomart.com  Fax: 1-631-938-8127

 45-1 Ramsey Road, Shirley, NY 11967, USA