

Recombinant Full Length Human SERPINI1 protein, His-tagged

Cat. No. SERPINI1-2345H Lot. No. (See product label)

SPECIFICATION

Product Overview	Recombinant Full Length Human SERPINI1 protein(NP_005016.1) (Met 1-Leu 410) was expressed in HEK293, with a C-terminal polyhistidine tag.
Species	Human
Source	HEK293
ProteinLength	1-410 aa
Form	Lyophilized from sterile PBS, pH 7.4.
Molecular Mass	The secreted recombinant human SERPINI1 consists of 405 amino acids after removal of the signal peptide and has a calculated molecular mass of 46 kDa. In SDS-PAGE under reducing conditions, the apparent molecular mass of rh SERPINI1 is approximately 50-55 kDa due to glycosylation.
Endotoxin	< 1.0 EU per µg of the protein as determined by the LAL method.
Purity	> 95 % as determined by SDS-PAGE
Storage	Store it under sterile conditions at -20°C to -80°C upon receiving. Recommend to aliquot the protein into smaller quantities for optimal storage. Avoid repeated freeze-thaw cycles.
Reconstitution	It is recommended that sterile water be added to the vial to prepare a stock solution of

 Tel: 1-631-559-9269 1-516-512-3133

 Email: info@creative-biomart.com  Fax: 1-631-938-8127

 45-1 Ramsey Road, Shirley, NY 11967, USA

0.2 ug/ul. Centrifuge the vial at 4°C before opening to recover the entire contents.

protein Refseq-Weblink http://www.ncbi.nlm.nih.gov/protein/NP_001116224.1

Unit ID Q99574

Unit ID-Weblink <https://www.uniprot.org/uniprotkb/Q99574>

GENE INFORMATION

Gene Name [SERPINI1 serpin peptidase inhibitor, clade I \(neuroserpin\), member 1 \[Homo sapiens \]](#)

Official Symbol [SERPINI1](#)

Synonyms SERPINI1; serpin peptidase inhibitor, clade I (neuroserpin), member 1; PI12, serine (or cysteine) proteinase inhibitor, clade I (neuroserpin), member 1; neuroserpin; PI-12; serpin I1; peptidase inhibitor 12; serine (or cysteine) proteinase inhibitor, clade I (neuroserpin), member 1; PI12; DKFZp781N13156;

Gene ID [5274](#)

mRNA Refseq [NM_001122752](#)

protein Refseq NP_001116224

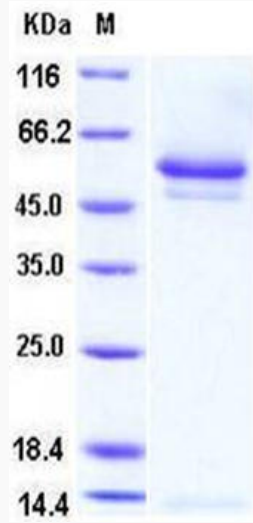
MIM [602445](#)

 Tel: 1-631-559-9269 1-516-512-3133

 Email: info@creative-biomart.com  Fax: 1-631-938-8127

 45-1 Ramsey Road, Shirley, NY 11967, USA

SDS-PAGE



 Tel: 1-631-559-9269 1-516-512-3133

 Email: info@creative-biomart.com  Fax: 1-631-938-8127

 45-1 Ramsey Road, Shirley, NY 11967, USA