

# Recombinant Human SERPINI2 Protein (Ser19-Leu405), C-His tagged

Cat. No. SERPINI2-5918H    Lot. No. (See product label)

## SPECIFICATION

<b>Product Overview</b>	Recombinant human SERPINI2 (Ser19-Leu405) fused with the C-terminal His tag was expressed in mammalian cells.
<b>Species</b>	Human
<b>Source</b>	Mammalian Cells
<b>ProteinLength</b>	Ser19-Leu405
<b>Form</b>	Lyophilized powder/frozen liquid
<b>Molecular Mass</b>	42.57 kDa
<b>Purity</b>	> 90 % as determined by SDS-PAGE
<b>Notes</b>	For research use only.
<b>Storage</b>	Use a manual defrost freezer and avoid repeated freeze thaw cycles. Store at 2 to 8 centigrade for one week. Store at -20 to -80 centigrade for twelve months from the date of receipt.
<b>Storage Buffer</b>	Supplied as solution form in PBS or lyophilized from PBS.
<b>Reconstitution</b>	Reconstitute in sterile water for a stock solution.

 Tel: 1-631-559-9269    1-516-512-3133

 Email: [info@creative-biomart.com](mailto:info@creative-biomart.com)     Fax: 1-631-938-8127

 45-1 Ramsey Road, Shirley, NY 11967, USA

**Shipping** They are shipped out with dry ice/blue ice unless customers require otherwise.

## GENE INFORMATION

**Gene Name** SERPINI2 serpin peptidase inhibitor, clade I (pancpin), member 2 [ Homo sapiens (human) ]

**Official Symbol** SERPINI2

**Synonyms** SERPINI2; serpin peptidase inhibitor, clade I (pancpin), member 2; PI14, serine (or cysteine) proteinase inhibitor, clade I (neuroserpin), member 2, serine (or cysteine) proteinase inhibitor, clade I (pancpin), member 2; serpin I2; MEPI; PANCPIN; pancpin; TSA2004; PI-14; protease inhibitor 14; peptidase inhibitor 14; pancreas-specific protein TSA2004; myoepithelium-derived serine protease inhibitor; serine (or cysteine) proteinase inhibitor, clade I (pancpin), member 2; serine (or cysteine) proteinase inhibitor, clade I (neuroserpin), member 2; PI14;

**Gene ID** 5276

**mRNA Refseq** NM\_006217

**Protein Refseq** NP\_006208

**MIM** 605587

**UniProt ID** O75830

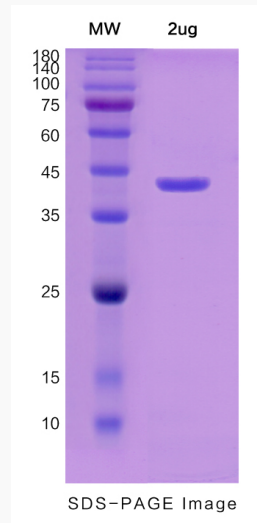
 Tel: 1-631-559-9269 1-516-512-3133

 Email: [info@creative-biomart.com](mailto:info@creative-biomart.com)  Fax: 1-631-938-8127

 45-1 Ramsey Road, Shirley, NY 11967, USA



SDS-PAGE



Tel: 1-631-559-9269 1-516-512-3133

Email: [info@creative-biomart.com](mailto:info@creative-biomart.com) Fax: 1-631-938-8127

45-1 Ramsey Road, Shirley, NY 11967, USA