

Recombinant Full Length Human SET nuclear oncogene Protein, Flag tagged

Cat. No. SET-02HFL Lot. No. (See product label)

SPECIFICATION

Product Overview	Recombinant protein of human SET nuclear oncogene (SET), transcript variant 2 with C-Flag tag was expressed in HEK293T.
Species	Human
Source	HEK293
ProteinLength	1-290 aa
Description	The protein encoded by this gene inhibits acetylation of nucleosomes, especially histone H4, by histone acetylases (HAT). This inhibition is most likely accomplished by masking histone lysines from being acetylated, and the consequence is to silence HAT-dependent transcription. The encoded protein is part of a complex localized to the endoplasmic reticulum but is found in the nucleus and inhibits apoptosis following attack by cytotoxic T lymphocytes. This protein can also enhance DNA replication of the adenovirus genome. Several transcript variants encoding different isoforms have been found for this gene.
Tag	C-Flag
Molecular Mass	31.9 kDa
AA Sequence	MSAPAAKVSKKELNSNHDGADETSEKEQQEAIHIDEVQNEIDRLNEQASEEILKVE QKYNKLRQPFFQKRSELIKIPNFWVTTFVNHPQVSALLGEEDEEALHYLTRVEVTE

 Tel: 1-631-559-9269 1-516-512-3133

 Email: info@creative-biomart.com  Fax: 1-631-938-8127

 45-1 Ramsey Road, Shirley, NY 11967, USA

FEDIKSGYRIDFYFDENPYFENKVLKSKEFHNLNESGDPSSKSTEIKWKSGKDLTKRSS
 QTQNKASRKRQHEEPESFFTWFTHSDAGADELGEVIKDDIWPNPLQYYLVPDMD
 DEEGEGEEDDDDDDEEEEGLEDIDEEGDEDEGEDEDDDEGEEGEEDEGEDDTRTR
 PLEQKLISEEDLAANDILDYKDDDDKV

Purity > 80% as determined by SDS-PAGE and Coomassie blue staining

Notes For testing in cell culture applications, please filter before use. Note that you may experience some loss of protein during the filtration process.

Stability Stable for 12 months from the date of receipt of the product under proper storage and handling conditions. Avoid repeated freeze-thaw cycles.

Storage Store at -80 centigrade.

Storage Buffer 25 mM Tris-HCl, 100 mM glycine, pH 7.3, 10% glycerol

Concentration >0.05 µg/µL as determined by microplate BCA method

GENE INFORMATION

Gene Name SET SET nuclear oncogene [Homo sapiens]

Official Symbol SET

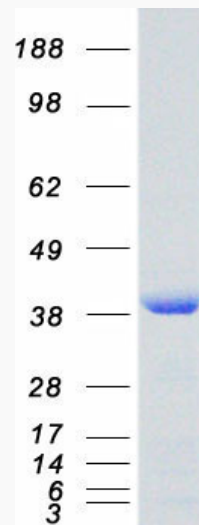
Synonyms SET; SET nuclear oncogene; SET translocation (myeloid leukemia associated); protein SET; 2PP2A; IPP2A2; PHAPII; protein phosphatase type 2A inhibitor; Template Activating Factor I; chromatin remodelling factor; HLA-DR-associated protein II; phosphatase 2A inhibitor I2PP2A; inhibitor-2 of protein phosphatase-2A; inhibitor of granzyme A-activated DNase; SET translocation (myeloid leukemia-associated); Template-Activating Factor-I, chromatin remodelling factor; IGAAD; TAF-

 Tel: 1-631-559-9269 1-516-512-3133

 Email: info@creative-biomart.com  Fax: 1-631-938-8127

 45-1 Ramsey Road, Shirley, NY 11967, USA

I; I2PP2A; TAF-IBETA

Gene ID 6418**mRNA Refseq** NM_003011**Protein Refseq** NP_003002**MIM** 600960**UniProt ID** Q01105**SDS-PAGE** Tel: 1-631-559-9269 1-516-512-3133 Email: info@creative-biomart.com  Fax: 1-631-938-8127 45-1 Ramsey Road, Shirley, NY 11967, USA