

# Recombinant Human SET Protein, Myc/DDK-tagged, C13 and N15-labeled

**Cat. No.** SET-5914H    **Lot. No.** (See product label)

## SPECIFICATION

<b>Product Overview</b>	SET MS Standard C13 and N15-labeled recombinant protein (NP_003002) with a C-terminal MYC/DDK tag, was expressed in HEK293 cells.
<b>Species</b>	Human
<b>Source</b>	HEK293
<b>Description</b>	The protein encoded by this gene inhibits acetylation of nucleosomes, especially histone H4, by histone acetylases (HAT). This inhibition is most likely accomplished by masking histone lysines from being acetylated, and the consequence is to silence HAT-dependent transcription. The encoded protein is part of a complex localized to the endoplasmic reticulum but is found in the nucleus and inhibits apoptosis following attack by cytotoxic T lymphocytes. This protein can also enhance DNA replication of the adenovirus genome. Several transcript variants encoding different isoforms have been found for this gene.
<b>Molecular Mass</b>	32.1 kDa
<b>AA Sequence</b>	MSAPAAKVSKKELNSNHDGADETSEKEQQEAIHIDEVQNEIDRLNEQASEEILKVE QKYNKLRQPFFQKRSELIKIPNFWVTFVNHQPQVSALLGEEDEEALHYLTRVEVTE FEDIKSGYRIDFYFDENPYFENKVLKSKEFHLNESGDPSSKSTEIKWKSGKDLTKRSS QTQNKASRKRQHEEPESFFTWFTHSDAGADELGEVIKDDIWPNPLQYYLVPDMD DEEGEGEEDDDDDDEEEGLEIDIEEGDEDEGEEDDDDEGEEGEEDEGEDDTRTR

 Tel: 1-631-559-9269    1-516-512-3133

 Email: [info@creative-biomart.com](mailto:info@creative-biomart.com)     Fax: 1-631-938-8127

 45-1 Ramsey Road, Shirley, NY 11967, USA

PLEQKLISEEDLAANDILDYKDDDDKV

**Purity** > 80% as determined by SDS-PAGE and Coomassie blue staining

**Stability** Stable for 3 months from receipt of products under proper storage and handling conditions.

**Storage** Store at -80 centigrade. Avoid repeated freeze-thaw cycles.

**Concentration** 50 µg/mL as determined by BCA

**Storage Buffer** 100 mM glycine, 25 mM Tris-HCl, pH 7.3.

## GENE INFORMATION

**Gene Name** [SET SET nuclear oncogene \[ Homo sapiens \(human\) \]](#)

**Official Symbol** [SET](#)

**Synonyms** SET; SET nuclear oncogene; SET translocation (myeloid leukemia associated); protein SET; 2PP2A; IPP2A2; PHAPII; protein phosphatase type 2A inhibitor; Template Activating Factor I; chromatin remodelling factor; HLA-DR-associated protein II; phosphatase 2A inhibitor I2PP2A; inhibitor-2 of protein phosphatase-2A; inhibitor of granzyme A-activated DNase; SET translocation (myeloid leukemia-associated); Template-Activating Factor-I, chromatin remodelling factor; IGAAD; TAF-I; I2PP2A; TAF-IBETA;

**Gene ID** [6418](#)

**mRNA Refseq** [NM\\_003011](#)

 Tel: 1-631-559-9269 1-516-512-3133

 Email: [info@creative-biomart.com](mailto:info@creative-biomart.com)  Fax: 1-631-938-8127

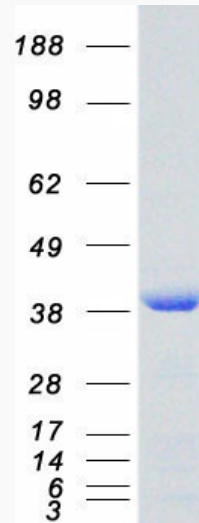
 45-1 Ramsey Road, Shirley, NY 11967, USA

**Protein Refseq** NP\_003002

**MIM** 600960

**UniProt ID** Q01105

**SDS-PAGE**



 Tel: 1-631-559-9269 1-516-512-3133

 Email: [info@creative-biomart.com](mailto:info@creative-biomart.com)  Fax: 1-631-938-8127

 45-1 Ramsey Road, Shirley, NY 11967, USA