

## Recombinant Human SETD2 Protein, His-tagged

Cat. No. SETD2-023H Lot. No. (See product label)

### SPECIFICATION

<b>Product Overview</b>	Recombinant Human SETD2 protein (1435-1711) with a N-terminal His-tag was expressed in E. coli.
<b>Species</b>	Human
<b>Source</b>	E.coli
<b>ProteinLength</b>	1435-1711
<b>Description</b>	Huntington's disease (HD), a neurodegenerative disorder characterized by loss of striatal neurons, is caused by an expansion of a polyglutamine tract in the HD protein huntingtin. This gene encodes a protein belonging to a class of huntingtin interacting proteins characterized by WW motifs. This protein is a histone methyltransferase that is specific for lysine-36 of histone H3, and methylation of this residue is associated with active chromatin. This protein also contains a novel transcriptional activation domain and has been found associated with hyperphosphorylated RNA polymerase II.
<b>Molecular Mass</b>	33.7 kDa
<b>Purity</b>	≥95% estimated by SDS-PAGE
<b>Stability</b>	≥ 9 months
<b>Storage</b>	-80 centigrade

 Tel: 1-631-559-9269 1-516-512-3133

 Email: [info@creative-biomart.com](mailto:info@creative-biomart.com)  Fax: 1-631-938-8127

 45-1 Ramsey Road, Shirley, NY 11967, USA

**Storage Buffer** 50 mM Tris-HCl, pH 8.0, containing 150 mM sodium chloride and 20% glycerol

## GENE INFORMATION

**Gene Name** SETD2 SET domain containing 2, histone lysine methyltransferase [ Homo sapiens (human) ]

**Official Symbol** SETD2

**Synonyms** SETD2; SET domain containing 2, histone lysine methyltransferase; LLS; HYPB; SET2; HIF-1; HIP-1; KMT3A; HBP231; HSPC069; p231HBP; histone-lysine N-methyltransferase SETD2; SET domain containing 2; huntingtin interacting protein 1; huntingtin yeast partner B; huntingtin-interacting protein B; lysine N-methyltransferase 3A; protein-lysine N-methyltransferase SETD2; EC 2.1.1.359

**Gene ID** 29072

**mRNA Refseq** NM\_014159

**Protein Refseq** NP\_054878

**MIM** 612778

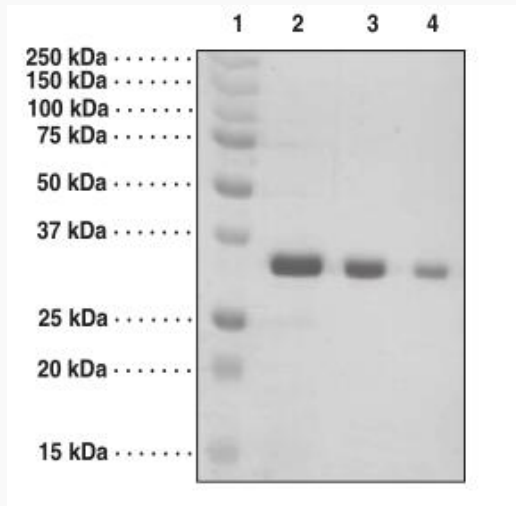
**UniProt ID** Q9BYW2

 Tel: 1-631-559-9269 1-516-512-3133

 Email: [info@creative-biomart.com](mailto:info@creative-biomart.com)  Fax: 1-631-938-8127

 45-1 Ramsey Road, Shirley, NY 11967, USA

**SDS-PAGE Analysis  
of SETD2.**



Lane 1: MW Markers  
Lane 2: SETD2 (5 µg)  
Lane 3: SETD2 (2.5 µg)  
Lane 4: SETD2 (1 µg)

 Tel: 1-631-559-9269 1-516-512-3133

 Email: [info@creative-biomart.com](mailto:info@creative-biomart.com)  Fax: 1-631-938-8127

 45-1 Ramsey Road, Shirley, NY 11967, USA