

Active Recombinant Human SETD2 protein, GST-tagged

Cat. No. SETD2-199H Lot. No. (See product label)

SPECIFICATION

Product Overview	Recombinant Human SETD2(1425-1717 aa) fused with GST tag at N-terminal was expressed in Insect cells.
Species	Human
Source	Insect Cells
ProteinLength	1425-1717 a.a.
Description	As a member of the mixed lineage leukemia (MLL) family of histone methyltransferase, SETD2 specifically tri-methylates 'Lys-36' of histone H3 (H3K36me3) using dimethylated 'Lys-36' (H3K36me2) as substrate. The main enzyme generating H3K36me3, a specific tag for epigenetic transcriptional activation.
Form	50mM Tris-HCl, pH 7.5, 150mM NaCl, 10mM glutathione, 0.1mM EDTA, 0.25mM DTT, 0.1mM PMSF, 25% glycerol.
Bio-activity	250 nmol/min/mg
Molecular Mass	61 kDa
Purity	>70%
Applications	Methyltransferase Assay

 Tel: 1-631-559-9269 1-516-512-3133

 Email: info@creative-biomart.com  Fax: 1-631-938-8127

 45-1 Ramsey Road, Shirley, NY 11967, USA

Stability	1 year at -70 centigrade from the date of shipment
Storage	Store product at -70 centigrade. For optimal storage, aliquot target into smaller quantities after centrifugation and store at recommended temperature. For most favorable performance, avoid repeated handling and multiple freeze/thaw cycles.
Concentration	0.1 µg/µl
GENE INFORMATION	
Gene Name	SETD2 SET domain containing 2 [Homo sapiens]
Official Symbol	SETD2
Synonyms	SETD2; SET domain containing 2; histone-lysine N-methyltransferase SETD2; FLJ23184; HIF 1; HYPB; KIAA1732; KMT3A; huntingtin yeast partner B; lysine N-methyltransferase 3A; huntingtin interacting protein 1; huntingtin-interacting protein B; SET2; HIF-1; H
Gene ID	29072
mRNA Refseq	NM_014159
Protein Refseq	NP_054878
MIM	612778
UniProt ID	Q9BYW2
Chromosome Location	3p21.31

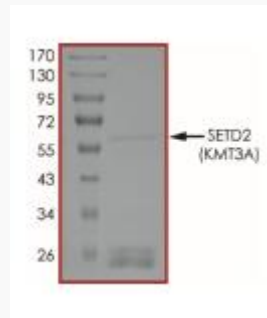
 Tel: 1-631-559-9269 1-516-512-3133

 Email: info@creative-biomart.com  Fax: 1-631-938-8127

 45-1 Ramsey Road, Shirley, NY 11967, USA

Pathway Lysine degradation, organism-specific biosystem; Lysine degradation, conserved biosystem;

Function DNA binding; histone-lysine N-methyltransferase activity; methyltransferase activity; oxidoreductase activity; protein binding; transferase activity; transition metal ion binding;



 Tel: 1-631-559-9269 1-516-512-3133

 Email: info@creative-biomart.com  Fax: 1-631-938-8127

 45-1 Ramsey Road, Shirley, NY 11967, USA