

Recombinant Human SET Domain Containing 2, GST-tagged

Cat. No. SETD2-460H Lot. No. (See product label)

SPECIFICATION

Product Overview	Recombinant Human SETD2 (amino acids 915-1211) was expressed in an <i>E. coli</i> expression system with N-terminal GST tag. MW=59.7 kDa.
Species	Human
Source	<i>E. coli</i>
Protein Length	915-1211 a.a.
Description	Histone-lysine N-methyltransferase SETD2 is an enzyme that in humans is encoded by the SETD2 gene. Huntington's disease (HD), a neurodegenerative disorder characterized by loss of striatal neurons, is caused by an expansion of a polyglutamine tract in the HD protein huntingtin. This gene encodes a protein belonging to a class of huntingtin interacting proteins characterized by WW motifs.
Formulated In	25 mM Tris-HCl, pH 8.0, 100 mM NaCl, 0.05% Tween-20, 30% glycerol, and 3 mM DTT.
Application	Useful for the study of enzyme kinetics, screening inhibitors, and selectivity profiling.
Purity	> 75%.
Stability	>6 months at -80°C.

GENE INFORMATION

 Tel: 1-631-559-9269 1-516-512-3133

 Email: info@creative-biomart.com  Fax: 1-631-938-8127

 45-1 Ramsey Road, Shirley, NY 11967, USA

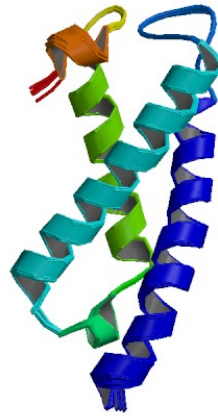
Gene Name	SETD2 SET domain containing 2 [Homo sapiens]
Synonyms	SET domain containing 2; HYPB; SET2; HIF-1; KMT3A; HBP231; HSPC069; p231HBP; FLJ16420; FLJ22472; FLJ23184; FLJ45883; FLJ46217; KIAA1732; SETD2; huntingtin yeast partner B; lysine N-methyltransferase 3A; SET domain-containing protein 2; huntingtin interacting protein 1; huntingtin-interacting protein B; histone-lysine N-methyltransferase SETD2; EC 2.1.1.43; HIF1; hSET2; Huntingtin yeast partner B; Huntingtin-interacting protein 1; Huntingtin-interacting protein B; Lysine N-methyltransferase 3A
Gene ID	29072
mRNA Refseq	NM_014159
Protein Refseq	NP_054878
MIM	612778
UniProt ID	Q9BYW2
Chromosome Location	3p21.31
Pathway	Lysine degradation
Function	DNA binding; histone-lysine N-methyltransferase activity; methyltransferase activity; oxidoreductase activity; protein binding; transferase activity; transition metal ion binding

 Tel: 1-631-559-9269 1-516-512-3133

 Email: info@creative-biomart.com  Fax: 1-631-938-8127

 45-1 Ramsey Road, Shirley, NY 11967, USA

PDB rendering based
on 2a7o.



 Tel: 1-631-559-9269 1-516-512-3133

 Email: info@creative-biomart.com  Fax: 1-631-938-8127

 45-1 Ramsey Road, Shirley, NY 11967, USA