

Recombinant Human SETD3 Protein, His-tagged

Cat. No. SETD3-048H Lot. No. (See product label)

SPECIFICATION

Product Overview	Recombinant N-terminal His-tagged human SETD3 protein (2-594) was expressed in E. coli.
Species	Human
Source	E.coli
ProteinLength	2-594
Description	Protein-histidine N-methyltransferase that specifically mediates methylation of actin at 'His-73' (PubMed:30526847, PubMed:30626964, PubMed:30785395, PubMed:31388018, PubMed:31993215). Histidine methylation of actin is required for smooth muscle contraction of the laboring uterus during delivery (PubMed:30626964). Does not have protein-lysine N-methyltransferase activity and probably only catalyzes histidine methylation of actin (PubMed:30626964, PubMed:30785395, PubMed:31388018).
Molecular Mass	69.2 kDa
Purity	≥80% as determined by SDS-PAGE
Unit Definition	One unit is defined as the amount of enzyme required to transfer one methyl group to actin peptide per minute using 8 μM actin peptide (LKYPIDHGIVTNWDDMEKIW-amide) at 37 centigrade in a Methyltransferase Colorimetric Assay Kit.

 Tel: 1-631-559-9269 1-516-512-3133

 Email: info@creative-biomart.com  Fax: 1-631-938-8127

 45-1 Ramsey Road, Shirley, NY 11967, USA


Applications	WB, ELISA, and enzymatic assays
Stability	≥ 6 months
Storage	At -80 centigrade.
Storage Buffer	50 mM HEPES, pH 8.0, with 150 mM sodium chloride and 10% glycerol

GENE INFORMATION

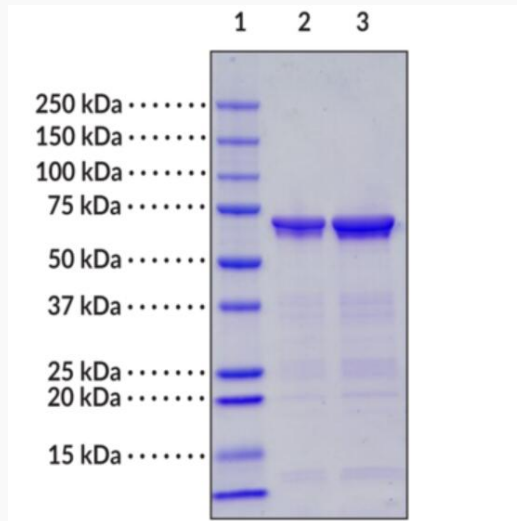
Gene Name	SETD3 SET domain containing 3, actin histidine methyltransferase [Homo sapiens (human)]
Official Symbol	SETD3
Synonyms	SETD3; SET domain containing 3, actin histidine methyltransferase; hSETD3; C14orf154; actin-histidine N-methyltransferase; SET domain-containing protein 3; histone-lysine N-methyltransferase setd3; EC 2.1.1.85
Gene ID	84193
mRNA Refseq	NM_032233
Protein Refseq	NP_115609
MIM	615671
UniProt ID	Q86TU7

 Tel: 1-631-559-9269 1-516-512-3133

 Email: info@creative-biomart.com  Fax: 1-631-938-8127

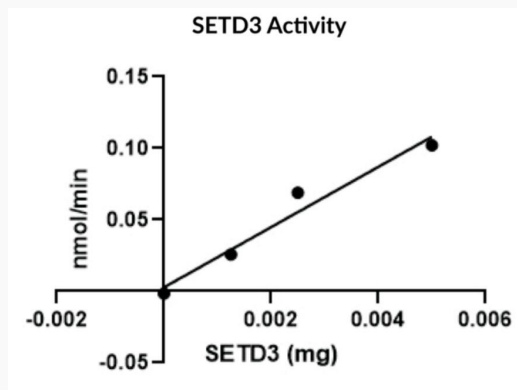
 45-1 Ramsey Road, Shirley, NY 11967, USA

**SDS-PAGE analysis
of SETD3**




Lane 1: MW Markers
Lane 2: SETD3 (2 µg)
Lane 3: SETD3 (4 µg)


Activity Assay



SETD3 activity was determined using methyltransferase colorimetric assay kit.

 Tel: 1-631-559-9269 1-516-512-3133

 Email: info@creative-biomart.com  Fax: 1-631-938-8127

 45-1 Ramsey Road, Shirley, NY 11967, USA