

Recombinant Full Length Human SETD3 Protein, C-Flag-tagged

Cat. No. SETD3-1861HFL **Lot. No.** (See product label)

SPECIFICATION

Product Overview	Recombinant Full Length Human SETD3 Protein, fused to Flag-tag at C-terminus, was expressed in Mammalian cells.
Species	Human
Source	Mammalian Cells
Description	Enables protein-L-histidine N-tele-methyltransferase activity. Involved in actin modification and peptidyl-histidine methylation. Located in cytoplasm.
Form	25 mM Tris HCl, pH 7.3, 100 mM glycine, 10% glycerol.
Molecular Mass	67.1 kDa
AA Sequence	<p>MGKKS RVKTQKSGTGATATVSPKEILNLTSELLQKCSSPAPGPGKEWEEYVQIRTLV EKIRKKQKGLSVT FDGKREDYFPDLMKWASENGASVEGFEMVNFKEEGFGLRATR DIKAEELFLWVPRKLLMTVESAKNSVLG PLYSQDRILQAMGNIALAFHLLCERASPN SFWQPYIQTLPSEYDTPLYFEEDEVRYLQSTQAIHDVFSQY KNTARQYAYFYKVIQT HPHANKLPLKDSFTYEDYRWAVSSVMTRQNQIPTEDGSRVTLALIPLWDMCNHT N GLITTGYNLEDDRCECV ALQDFRAGEQIYIFYGTRSNAEFVIHSGFFFFDNNSHDRVKI KLGVSKSDRLY AMKAEVLARAGIPTSSVFALHFTEPPISAQLLAFLRVFCMTEEELKE HLLGDSAIDRIFTLGNSEFPVSW DNEVKLWTFLEDRASLLKTYKTIIEDKSVLKNH DLSVRAKMAIKLRLGEKEILEKAVKSAAVNREYYR QQMEEKAPLPKYEESNLGLLES SVGDSRLPLVLRNLEEEAGVQDALNIREAISKAKATENGLVNGENSIP NGTRSENE</p>

 Tel: 1-631-559-9269 1-516-512-3133

 Email: info@creative-biomart.com  Fax: 1-631-938-8127

 45-1 Ramsey Road, Shirley, NY 11967, USA

LNQESKRAVEDAKGSSSDSTAGVKE TRTRPLEQKLISEEDLAANDILDYKDDDDKV

Purity > 80% as determined by SDS-PAGE and Coomassie blue staining.

Stability Stable for 12 months from the date of receipt of the product under proper storage and handling conditions. Avoid repeated freeze-thaw cycles.

Storage Store at -80 centigrade.

Concentration >50 ug/mL as determined by microplate BCA method.

Preparation Recombinant protein was captured through anti-DDK affinity column followed by conventional chromatography steps.

Full Length Full L.

GENE INFORMATION

Gene Name SETD3 SET domain containing 3, actin histidine methyltransferase [Homo sapiens (human)]

Official Symbol SETD3

Synonyms hSETD3; C14orf154

Gene ID 84193

mRNA Refseq NM_032233.3

Protein Refseq NP_115609.2

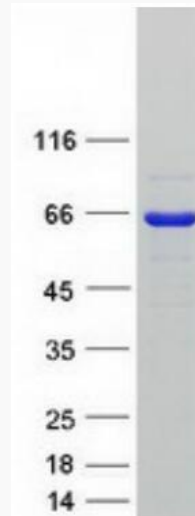
 Tel: 1-631-559-9269 1-516-512-3133

 Email: info@creative-biomart.com  Fax: 1-631-938-8127

 45-1 Ramsey Road, Shirley, NY 11967, USA

MIM 615671

UniProt ID Q86TU7



Coomassie blue staining of purified SETD3 protein.

 Tel: 1-631-559-9269 1-516-512-3133

 Email: info@creative-biomart.com  Fax: 1-631-938-8127

 45-1 Ramsey Road, Shirley, NY 11967, USA