

# Recombinant Human SETD6 Protein, Myc/DDK-tagged, C13 and N15-labeled

Cat. No. SETD6-3582H Lot. No. (See product label)

## SPECIFICATION

### Product Overview

SETD6 MS Standard C13 and N15-labeled recombinant protein (NP\_079136) with a C-terminal MYC/DDK tag, was expressed in HEK293 cells.

### Species

Human

### Source

HEK293

### Description

This gene encodes a methyltransferase that adds a methyl group to the histone H2AZ, which is involved in nuclear receptor-dependent transcription. The protein also interacts with several endogenous proteins which are involved in nuclear hormone receptor signaling. A related pseudogene is located on chromosome 2. Alternative splicing results in multiple transcript variants.

### Molecular Mass

50.6 kDa

### AA Sequence

MATQAKRPRVAGPVDGGDLDPVACFLSWCRRVGLLELSPKVAVSRQGTVAGYGMV  
 ARESVQAGELLFVVPRAALLSQHTCSIGLLERERVALQSQSGWVPLLLALLHELQA  
 PASRWRPYFALWPELGRLEHPMFWPEEERRCLLQGTGVPEAVEKDLANIRSEYQSI  
 VLPFMEAHPDLFSLRVRSLLEYHQLVALVMAYSFQEPLLEEEDEKEPNSPVMVPA  
 DILNHLANHNANLEYSANCLRMVATQPIPKGHEIFNTYGQMANWQLIHMYGFVEPYP  
 DNTDDTADIQMVTVREAALQGKTEAERHLVYERWDFLCKLEMVGEEGAFVIGREE  
 VLTEEELTTTLKVLCPAAEFRELKDQDGGGDDKREEGSLTITNIPKLKASWRQLLQ  
 NSVLLTLQTYATDLKTDQGLLSNKEVYAKLSWREQQALQVRYGQKMILHQLLELTST

Tel: 1-631-559-9269 1-516-512-3133

Email: [info@creative-biomart.com](mailto:info@creative-biomart.com) Fax: 1-631-938-8127

45-1 Ramsey Road, Shirley, NY 11967, USA

RTRPLEQKLISEEDLAANDILDYKDDDDKV

**Purity** > 80% as determined by SDS-PAGE and Coomassie blue staining

**Stability** Stable for 3 months from receipt of products under proper storage and handling conditions.

**Storage** Store at -80 centigrade. Avoid repeated freeze-thaw cycles.

**Concentration** 50 µg/mL as determined by BCA

**Storage Buffer** 100 mM glycine, 25 mM Tris-HCl, pH 7.3.

## GENE INFORMATION

**Gene Name** SETD6 SET domain containing 6 [ Homo sapiens (human) ]

**Official Symbol** SETD6

**Synonyms** SETD6; SET domain containing 6; N-lysine methyltransferase SETD6; FLJ21148; SET domain-containing protein 6;

**Gene ID** 79918

**mRNA Refseq** NM\_024860


**Protein Refseq** NP\_079136

**MIM** 616424

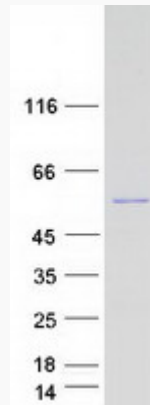
**UniProt ID** Q8TBK2

 Tel: 1-631-559-9269 1-516-512-3133

 Email: [info@creative-biomart.com](mailto:info@creative-biomart.com)  Fax: 1-631-938-8127

 45-1 Ramsey Road, Shirley, NY 11967, USA

**SDS-PAGE**



 Tel: 1-631-559-9269 1-516-512-3133

 Email: [info@creative-biomart.com](mailto:info@creative-biomart.com)  Fax: 1-631-938-8127

 45-1 Ramsey Road, Shirley, NY 11967, USA