

## Active Recombinant Human SETD7 Protein, His-tagged

Cat. No. SETD7-129H Lot. No. (See product label)

### SPECIFICATION

<b>Product Overview</b>	Active recombinant N-terminal His-tagged full-length human SET7/9 protein (1-366) was purified from E. coli.
<b>Species</b>	Human
<b>Source</b>	E.coli
<b>ProteinLength</b>	1-366
<b>Description</b>	Histone methyltransferase that specifically monomethylates 'Lys-4' of histone H3. H3 'Lys-4' methylation represents a specific tag for epigenetic transcriptional activation. Plays a central role in the transcriptional activation of genes such as collagenase or insulin. Recruited by IPF1/PDX-1 to the insulin promoter, leading to activate transcription. Has also methyltransferase activity toward non-histone proteins such as p53/TP53, TAF10, and possibly TAF7 by recognizing and binding the [KR]-[STA]-K in substrate proteins. Monomethylates 'Lys-189' of TAF10, leading to increase the affinity of TAF10 for RNA polymerase II. Monomethylates 'Lys-372' of p53/TP53, stabilizing p53/TP53 and increasing p53/TP53-mediated transcriptional activation.
<b>Bio-activity</b>	Activity was determined using 50µM human TAF10 peptide (amino acids 186-195) (Ac) SKSKDRKYTL at 37 centigrade using a Methyltransferase Colorometric Assay Kit.
<b>Molecular Mass</b>	43.3 kDa

 Tel: 1-631-559-9269 1-516-512-3133

 Email: [info@creative-biomart.com](mailto:info@creative-biomart.com)  Fax: 1-631-938-8127

 45-1 Ramsey Road, Shirley, NY 11967, USA

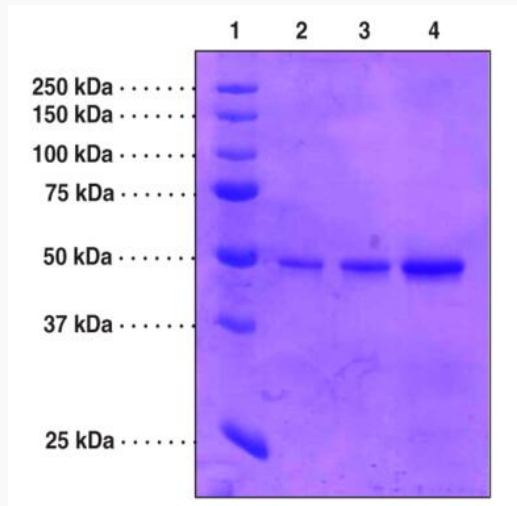
<b>Purity</b>	≥95% as determined by SDS-PAGE
<b>Stability</b>	≥ 6 months
<b>Storage</b>	At -80 centigrade.
<b>Storage Buffer</b>	50 mM HEPES, pH 7.2, 100 mM sodium chloride, and 20% glycerol
<b>GENE INFORMATION</b>	
<b>Gene Name</b>	SETD7 SET domain containing 7, histone lysine methyltransferase [ Homo sapiens (human) ]
<b>Official Symbol</b>	SETD7
<b>Synonyms</b>	SETD7; SET domain containing 7, histone lysine methyltransferase; KMT7; SET7; SET9; SET7/9; histone-lysine N-methyltransferase SETD7; H3-K4-HMTase SETD7; SET domain containing 7, lysine methyltransferase; SET domain containing lysine methyltransferase 7; SET domain-containing protein 7; histone H3-K4 methyltransferase SETD7; histone H3-lysine 4-specific methyltransferase; lysine N-methyltransferase 7; EC 2.1.1.364
<b>Gene ID</b>	80854
<b>mRNA Refseq</b>	NM_030648
<b>Protein Refseq</b>	NP_085151
<b>MIM</b>	606594
<b>UniProt ID</b>	Q8WTS6

 Tel: 1-631-559-9269 1-516-512-3133

 Email: [info@creative-biomart.com](mailto:info@creative-biomart.com)  Fax: 1-631-938-8127

 45-1 Ramsey Road, Shirley, NY 11967, USA

**SDS-PAGE analysis  
of SETD7/9**



Lane 1: MW Ladder  
Lane 2: SETD7/9 (1 µg)  
Lane 3: SETD7/9 (2 µg)  
Lane 4: SETD7/9 (5 µg)

 Tel: 1-631-559-9269 1-516-512-3133

 Email: [info@creative-biomart.com](mailto:info@creative-biomart.com)  Fax: 1-631-938-8127

 45-1 Ramsey Road, Shirley, NY 11967, USA