

## Recombinant Human SETD7 Protein, His-tagged

Cat. No. SETD7-22H Lot. No. (See product label)

### SPECIFICATION

<b>Product Overview</b>	Recombinant human SETD7(1-366) protein with a N-terminal His-tag was expressed in E. coli.
<b>Species</b>	Human
<b>Source</b>	E.coli
<b>ProteinLength</b>	1-366
<b>Description</b>	Methylation of lysine can promote transcriptional activation or repression and is critical in regulating histone function. Lysine residues can be mono-, di-, or tri-methylated, and unlike most SET proteins, SET7/9 is exclusively a mono-methylase. SET7/9 methylates histone H3, tumor suppressor p53, and transcription factor TAF10. Recently, SET7/9 was shown to catalyze methylation of p53 in response to DNA damage thereby activating p53 for subsequent acetylation. SET7/9 is able to modulate p53 activity in a human cancer cell line, implying that it may play a significant role in human tumorigenesis.
<b>Molecular Mass</b>	43.3 kDa
<b>Purity</b>	≥95% estimated by SDS-PAGE
<b>Stability</b>	≥ 6 months
<b>Storage</b>	Store it at -80 centigrade

 Tel: 1-631-559-9269 1-516-512-3133

 Email: [info@creative-biomart.com](mailto:info@creative-biomart.com)  Fax: 1-631-938-8127

 45-1 Ramsey Road, Shirley, NY 11967, USA

**Storage Buffer** 50 mM HEPES, pH 7.2, 100 mM sodium chloride, and 20% glycerol

## GENE INFORMATION

**Gene Name** SETD7 SET domain containing 7, histone lysine methyltransferase [ Homo sapiens (human) ]

**Official Symbol** SETD7

**Synonyms** SETD7; SET domain containing 7, histone lysine methyltransferase; KMT7; SET7; SET9; SET7/9; histone-lysine N-methyltransferase SETD7; H3-K4-HMTase SETD7; SET domain containing 7, lysine methyltransferase; SET domain containing lysine methyltransferase 7; SET domain-containing protein 7; histone H3-K4 methyltransferase SETD7; histone H3-lysine 4-specific methyltransferase; lysine N-methyltransferase 7

**Gene ID** 80854

**mRNA Refseq** NM\_001306199

**Protein Refseq** NP\_001293128

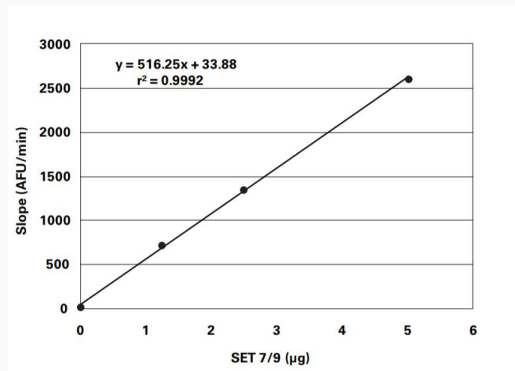
**MIM** 606594

**UniProt ID** Q8WTS6

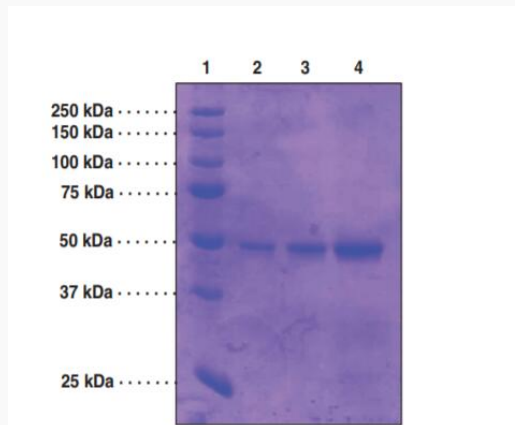
 Tel: 1-631-559-9269 1-516-512-3133

 Email: [info@creative-biomart.com](mailto:info@creative-biomart.com)  Fax: 1-631-938-8127

 45-1 Ramsey Road, Shirley, NY 11967, USA



### SDS-PAGE Analysis of SETD7



Lane 1: MW Markers; Lane 2: SET7/9 (1 µg); Lane 3: SET7/9 (2 µg); Lane 4: SET7/9 (5 µg). Representative gel image shown; actual purity may vary between each batch but protein will be  $\geq 95\%$  pure.

Tel: 1-631-559-9269 1-516-512-3133

Email: [info@creative-biomart.com](mailto:info@creative-biomart.com) Fax: 1-631-938-8127

45-1 Ramsey Road, Shirley, NY 11967, USA