

## Recombinant Human SETD7 protein, His-tagged

Cat. No. SETD7-882H Lot. No. (See product label)

### SPECIFICATION

<b>Product Overview</b>	Recombinant Human SETD7 protein(NP_085151.1) (Asp 2-Lys 366) was expressed in E. coli, with a polyhistidine tag at the N-terminus.
<b>Species</b>	Human
<b>Source</b>	E. coli
<b>ProteinLength</b>	2-366 aa
<b>Form</b>	Lyophilized from sterile PBS, pH 7.4.
<b>Molecular Mass</b>	The recombinant human SETD7 comprises 372 amino acids and has a predicted molecular mass of 41.5 kDa. It migrates as an approximately 48 kDa band in SDS-PAGE under reducing conditions.
<b>Purity</b>	> 94 % as determined by SDS-PAGE
<b>Storage</b>	Store it under sterile conditions at -20°C to -80°C upon receiving. Recommend to aliquot the protein into smaller quantities for optimal storage. Avoid repeated freeze-thaw cycles.
<b>Reconstitution</b>	It is recommended that sterile water be added to the vial to prepare a stock solution of 0.2 ug/ul. Centrifuge the vial at 4°C before opening to recover the entire contents.
<b>protein Refseq-</b>	<a href="http://www.ncbi.nlm.nih.gov/protein/NP_085151.1">http://www.ncbi.nlm.nih.gov/protein/NP_085151.1</a>

 Tel: 1-631-559-9269 1-516-512-3133

 Email: [info@creative-biomart.com](mailto:info@creative-biomart.com)  Fax: 1-631-938-8127

 45-1 Ramsey Road, Shirley, NY 11967, USA

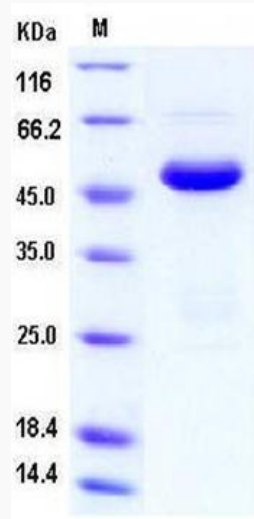
<b>Weblink</b>	
<b>Unit ID</b>	Q8WTS6
<b>Unit ID-Weblink</b>	<a href="https://www.uniprot.org/uniprotkb/Q8WTS6">https://www.uniprot.org/uniprotkb/Q8WTS6</a>
<b>GENE INFORMATION</b>	
<b>Gene Name</b>	SETD7 SET domain containing (lysine methyltransferase) 7 [ Homo sapiens ]
<b>Official Symbol</b>	SETD7
<b>Synonyms</b>	SETD7; SET domain containing (lysine methyltransferase) 7; histone-lysine N-methyltransferase SETD7; KIAA1717; KMT7; SET7; SET7/9; Set9; H3-K4-HMTase SETD7; lysine N-methyltransferase 7; SET domain-containing protein 7; histone H3-K4 methyltransferase SETD7; histone H3-lysine 4-specific methyltransferase; SET9; FLJ21193;
<b>Gene ID</b>	80854
<b>mRNA Refseq</b>	NM_030648
<b>protein Refseq</b>	NP_085151
<b>MIM</b>	606594

 Tel: 1-631-559-9269 1-516-512-3133

 Email: [info@creative-biomart.com](mailto:info@creative-biomart.com)  Fax: 1-631-938-8127

 45-1 Ramsey Road, Shirley, NY 11967, USA

**SDS-PAGE**



 Tel: 1-631-559-9269 1-516-512-3133

 Email: [info@creative-biomart.com](mailto:info@creative-biomart.com)  Fax: 1-631-938-8127

 45-1 Ramsey Road, Shirley, NY 11967, USA