

## Recombinant Human SET Domain Containing (lysine methyltransferase) 8, GST-tagged

Cat. No. SETD8-1631H Lot. No. (See product label)

### SPECIFICATION

<b>Product Overview</b>	Recombinant full-length human SETD8 was expressed by baculovirus in Sf9 insect cells using an N-terminal GST tag.
<b>Species</b>	Human
<b>Source</b>	Sf9 Cells
<b>Description</b>	SETD8 is a lysine methyltransferase that monomethylates p53 in human cell lines. The monomethylation by SETD8 suppresses p53-mediated transcriptional activation of highly responsive target genes, such as p21 and PUMA but it has little influence on weak p53 targets. Depletion of SET8 augmented the proapoptotic and checkpoint activation functions of p53, and SETD8 expression is downregulated during DNA damage.
<b>Applications</b>	Western Blot
<b>Molecular Weight</b>	68 kDa
<b>Expression System</b>	Sf9 insect cells using baculovirus
<b>Form</b>	Recombinant protein stored in 50 mM Tris-HCl, pH 7.5, 150 mM NaCl, 10 mM glutathione, 0.1 mM EDTA, 0.25 mM DTT, 0.1mM PMSF, 25 % glycerol.
<b>Purity</b>	> 85 %

 Tel: 1-631-559-9269 1-516-512-3133

 Email: [info@creative-biomart.com](mailto:info@creative-biomart.com)  Fax: 1-631-938-8127

 45-1 Ramsey Road, Shirley, NY 11967, USA

<b>Concentration</b>	0.1 ug/ul
<b>Sequences</b>	Full length
<b>Storage</b>	Store product at -70°C. For optimal storage, aliquot target into smaller quantities after centrifugation and store at recommended temperature. For most favorable performance, avoid repeated handling and multiple freeze/thaw cycles.
<b>Pathways</b>	Lysine degradation; p53 pathway

## GENE INFORMATION

<b>Gene Name</b>	SETD8 SET domain containing (lysine methyltransferase) 8 [ Homo sapiens ]
<b>Official Symbol</b>	SETD8
<b>Synonyms</b>	SETD8; SET domain containing (lysine methyltransferase) 8; SET8; KMT5A; SET07; PR-Set7; N-lysine methyltransferase SETD8; PR/SET07; OTTHUMP00000197452; OTTHUMP00000197454; H4-K20-HMTase SETD8; lysine N-methyltransferase 5A; SET domain-containing protein 8; PR/SET domain containing protein 8; PR/SET domain-containing protein 07; histone-lysine N-methyltransferase SETD8; H4-K20-specific histone methyltransferase; H4K20-specific histone methyltransferase splice variant Set8b; EC 2.1.1.43; N-lysine methyltransferase SETD8; Lysine N-methyltransferase 5A
<b>Gene ID</b>	387893
<b>mRNA Refseq</b>	NM_020382
<b>Protein Refseq</b>	NP_065115

 Tel: 1-631-559-9269 1-516-512-3133

 Email: [info@creative-biomart.com](mailto:info@creative-biomart.com)  Fax: 1-631-938-8127

 45-1 Ramsey Road, Shirley, NY 11967, USA

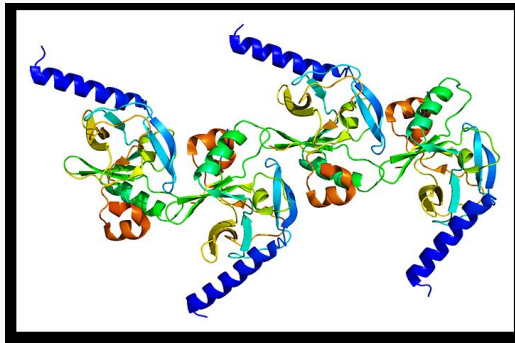
**MIM** 607240

**UniProt ID** Q9NQR1

**Chromosome  
Location** 12q24.31

**Function** histone-lysine N-methyltransferase activity; methyltransferase activity; p53 binding;  
protein binding; protein-lysine N-methyltransferase activity; transferase activity

**PDBrendering based  
on 1zkk.**



 Tel: 1-631-559-9269 1-516-512-3133

 Email: [info@creative-biomart.com](mailto:info@creative-biomart.com)  Fax: 1-631-938-8127

 45-1 Ramsey Road, Shirley, NY 11967, USA