

Recombinant Human SETD8 protein, His-tagged

Cat. No. SETD8-2608H Lot. No. (See product label)

SPECIFICATION

Product Overview	Recombinant Human SETD8 protein(1-352 aa), fused with N-terminal His tag, was expressed in E. coli.
Species	Human
Source	E.coli
ProteinLength	1-352 aa
Tag	N-His
Form	The purified protein was Lyophilized from sterile PBS (58mM Na ₂ HPO ₄ , 17mM NaH ₂ PO ₄ , 68mM NaCl, pH7.4). 5 % trehalose and 5 % mannitol are added as protectant before lyophilization.
Purity	85%, by SDS-PAGE with Coomassie Brilliant Blue staining.
Storage	Short-term storage: Store at 2-8°C for (1-2 weeks). Long-term storage: Aliquot and store at -20°C to -80°C for up to 3 months, reconstitution with sterile water and addition of an equal volume of glycerol. Avoid repeat freeze-thaw cycles.
Reconstitution	Reconstitute at 0.25 µg/µl in 200 µl sterile water for short-term storage. After reconstitution with sterile water, if glycerol has no effect on subsequent experiments, it is recommended to add an equal volume of glycerol for long-term storage.

 Tel: 1-631-559-9269 1-516-512-3133

 Email: info@creative-biomart.com  Fax: 1-631-938-8127

 45-1 Ramsey Road, Shirley, NY 11967, USA

AA Sequence

MARGRKMSKPRAVEAAAAAAAAVAATAPGPEMVERRGPRPRTDGENVFTGQSKIY
 SYMSPNKCSGMRFPQLQEENSVTHHEVKCQGKPLAGIYRKREEKRNAGNAVRSAMK
 SEEQKIKDARKGPLVFPNQKSEAAEPPKTPSSCDSTNAAIAKQALKKPIKGKQAP
 RKKAQGKTQQNRKLTDFYPVRRSSRKSKAELQSEERKRIDELIESGKEEGMKIDLID
 GKGRGVIATKQFSRGDFVVEYHGDLIEITDAKKREALYAQDPSTGCYMYFFQYLSKT
 YCVDATRETNRLGRLINHSKCGNCQTKLHDIDGVRHLILIASRDIAAGEELLYDYGDR
 SKASIEAHPWLKH

GENE INFORMATION

Gene Name SETD8 SET domain containing (lysine methyltransferase) 8 [Homo sapiens]

Official Symbol SETD8

Synonyms

SETD8; SET domain containing (lysine methyltransferase) 8; N-lysine methyltransferase SETD8; KMT5A; PR Set7; SET07; SET8; PR/SET07; H4-K20-HMTase SETD8; lysine N-methyltransferase 5A; SET domain-containing protein 8; PR/SET domain containing protein 8; PR/SET domain-containing protein 07; histone-lysine N-methyltransferase SETD8; H4-K20-specific histone methyltransferase; H4K20-specific histone methyltransferase splice variant Set8b; PR-Set7;

Gene ID 387893

mRNA Refseq NM_020382

Protein Refseq NP_065115

MIM 607240

UniProt ID Q9NQR1

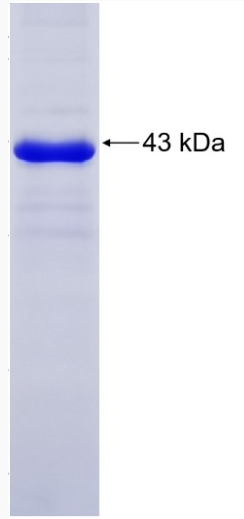
 Tel: 1-631-559-9269 1-516-512-3133

 Email: info@creative-biomart.com  Fax: 1-631-938-8127

 45-1 Ramsey Road, Shirley, NY 11967, USA



SDS-PAGE



Tel: 1-631-559-9269 1-516-512-3133

Email: info@creative-biomart.com Fax: 1-631-938-8127

45-1 Ramsey Road, Shirley, NY 11967, USA