

Recombinant Human SEZ6 protein, His-Avi-tagged, Biotinylated

Cat. No. SEZ6-13H Lot. No. (See product label)

SPECIFICATION

Product Overview	Recombinant Human SI Protein (Lys62-Trp931), fused with C-terminal His tag, was expressed in HEK293.
Species	Human
Source	HEK293
ProteinLength	Lys62-Trp931
Tag	C-His
Form	Liquid in sterile PBS, pH7.4.
Molecular Mass	The protein has a calculated MW of 101 kDa.
Endotoxin	<1.0 EU per 1µg (determined by the LAL method).
Purity	> 90% as determined by SDS-PAGE.
Storage	Store it under sterile conditions at -70°C to -80°C. Liquid protein stable at -80°C for 12 months, 4°C for 1 week. Use a manual defrost freezer and avoid repeated freeze-thaw cycles.
Concentration	0.38 mg/mL by BCA.

 Tel: 1-631-559-9269 1-516-512-3133

 Email: info@creative-biomart.com  Fax: 1-631-938-8127

 45-1 Ramsey Road, Shirley, NY 11967, USA

Reconstitution It is recommended that sterile water be added to the vial to prepare a stock solution of 0.2 ug/ul. Centrifuge the vial at 4°C before opening to recover the entire contents.

AA Sequence

KCPNVLNDPVNVRINCIPEQFPTEGICAQRGCCWRPWNDLIPWCFFVDNHGYNVQ
 DMTTTSIGVEAKLNRIPSPTLFGNDINSVLFTTQNTPNRFRFKITDPNNRRYEVPHQ
 YVKEFTGPTVSDTLVDVKAQNPFSIQVIRKSNGKTLFDTSIGPLVYSQYQLQISTRLP
 SDYIYGIGEQQVHKRFRHDLWKTWPIFTRDQLPGDNNNNLYGHQTTFFMCIEDTSGK
 SFGVFLMNSNAMEIFIQPTPIVTYRVTGGILDFYILLGDTPEQVVQQYQQLVGLPAMP
 AYWNLGFQLSRWNYKSLDVVKEVRRNREAGIPFDTQVTDIDYMEDKKDFTYDQVA
 FNGLPQFVQDLHDHGQKYVIILDPAISIGRRANGTTYATYERGNTQHVWINESDGST
 PIIGEVWPGLTVYPDFTNPCIDWWANECSIFHQEVQYDGLWIDMNEVSSFIQGSTK
 GCNVNKLNYPPFTPDILDKLMYSKTICMDAVQNWGKQYDVHSLYGYSMIAIATEQAV
 QKVFPNKRSFILTRSTFAGSGRHAHHLGDNTASWEQMEWSITGMLEFSLFGIPLV
 GADICGFVAETTEELCRRWMQLGAFYPFSSRNHNSDGYEHQDPAFFGQNSLLVKSS
 RQYLTIKYTLLPFLYTLFYKAHVFGETVARPVLHEFYEDTNSWIEDTEFLWGPALLITP
 VLKQGADTVSAYIPDAIWYDYESGAKRPWRKQRVDMYLPADKIGLHLRGGYIPIQEP
 DVTTTASRKNPLGLIVALGENNTAKGDFFWDDGETKDTIQNGNYILYTFVSNNTLDI
 VCTHSSYQEGTTLAFQTVKILGLTDSVTEVRVAENNQPMNAHSNFTYDASNQVLLIA
 DLKLNLRNFSVQWSGGGSGGGSHHHHHHHHHH

Conjugation Biotin

GENE INFORMATION

Gene Name [SI sucrase-isomaltase \(alpha-glucosidase\) \[Homo sapiens \]](#)

Official Symbol [SI](#)

Synonyms SI; sucrase-isomaltase (alpha-glucosidase); sucrase isomaltase; sucrase-isomaltase, intestinal; Oligosaccharide alpha 1; 6 glucosidase; oligosaccharide alpha-1,6-

 Tel: 1-631-559-9269 1-516-512-3133

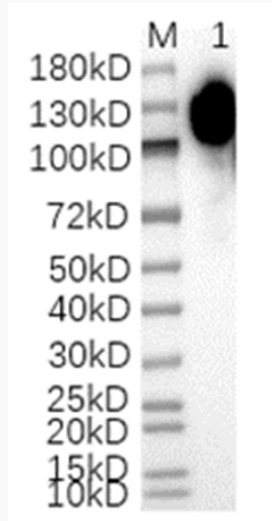
 Email: info@creative-biomart.com  Fax: 1-631-938-8127

 45-1 Ramsey Road, Shirley, NY 11967, USA

glucosidase; MGC131621; MGC131622;


Gene ID 6476**mRNA Refseq** NM_001041**Protein Refseq** NP_001032**MIM** 609845**UniProt ID** P14410**SDS-PAGE** Tel: 1-631-559-9269 1-516-512-3133 Email: info@creative-biomart.com  Fax: 1-631-938-8127 45-1 Ramsey Road, Shirley, NY 11967, USA

WB



 Tel: 1-631-559-9269 1-516-512-3133

 Email: info@creative-biomart.com  Fax: 1-631-938-8127

 45-1 Ramsey Road, Shirley, NY 11967, USA