

Recombinant Full Length Human SEZ6 Protein, C-Flag-tagged

Cat. No. SEZ6-554HFL Lot. No. (See product label)

SPECIFICATION

Product Overview	Recombinant Full Length Human SEZ6 Protein, fused to Flag-tag at C-terminus, was expressed in Mammalian cells.
Species	Human
Source	Mammalian Cells
Description	The protein encoded by this gene is thought to contain five cysteine-rich motifs that are similar to sushi domains, as well as two domains similar to the amino terminal half of the CUB (for complement C1r/C1s, Uegf, Bmp1) domain. Mutations in this gene have been associated with febrile seizures.
Form	25 mM Tris HCl, pH 7.3, 100 mM glycine, 10% glycerol.
Molecular Mass	107.2 kDa
AA Sequence	MRPVALLLLPSLLALLAHGLSLEAPTVGKQGAPGIEETDGELTAAPTPEQPERGVHF VTTAPTLKLLNHH PLLEEFLEQEGLEKGDDELRPALPFQPDPPAPFTPSPLPRLANQD SRPVFTSPTPAMAAVPTQPQSKEGPW SPESESPMLRITAPLPPGPSMAVPTLGGP EIASTTPPSRAWPTPTQEGPGDMGRPWVAEVVSQGAGIGIQG TITSSTASGDDEETT TTTTIITTTITTVQTPGPCSWNFSGPEGLSDSPTDLSSPTDVGLDCFFYISVYPG YGV EIKVQNISLREGETVTV EGLGGPDPLPLANQSFLLRGQVIRSPHQAALRFQSLPPPA GPGTFHFHY QAYLLSCHFRRPAYGDVTVTSLHPGG SARFHCATGYQLK GARHLT CLNATQPFWDSKEPVCIAACGGVI RNATTGRIVSPGFPGNYSNNLTCHWLLEAPEG QRLHLHF EKVSLAEDDDR LIIRNGDNVEAPPVYDSYEV EYLP IEGLLSSGKHFFVELS

 Tel: 1-631-559-9269 1-516-512-3133

 Email: info@creative-biomart.com  Fax: 1-631-938-8127

 45-1 Ramsey Road, Shirley, NY 11967, USA

TDSSGAAAGMALRYEAFQQGHICYEPFVKYGNFSSSTPTYPVGTTVEFSCD PGYTL
 EQGSIIIIECVDPHPDQWNETEPACRAVCSGEITDSAGVVLSPNWPEPYGRGQDCIW
 GVHVEEDKR IMLDIRVLRIGPGDVLTFYDGDDLARVVLGQYSGPRSHFKLFTSMADV
 TIQFQSDPGTSLVLYGQQGFVIH FFEVPRNDTCPELPEIPNGWKSPSQPELVHGTVV
 TYQCYPGYQVVGSSVLMCQWDLTWSEDLPSCQRVTS CHDPGDVEHSRRLISSPK
 FPVGATVQYICDQGFVLMGSSILTCHDRQAGSPKWSDRAPKCLLEQLKPCHG LSAP
 ENGARSPEKQLHPAGATIHFSAPGYVLKGQASIKCVPGHPSHWSPPPICRAASL
 DGFYNSRSLD VAKAPAAASSTLDAAHIAAAIFLPLVAMVLLVGGVYFYFSRLQGKSSL
 QLPRPRPRPYNRITIESAFDNPT
 YETGSLSFAGDERITRTRPLEQKLISEEDLAANDILDYKDDDDKV

Purity	> 80% as determined by SDS-PAGE and Coomassie blue staining.
Stability	Stable for 12 months from the date of receipt of the product under proper storage and handling conditions. Avoid repeated freeze-thaw cycles.
Storage	Store at -80 centigrade.
Concentration	>50 ug/mL as determined by microplate BCA method.
Preparation	Recombinant protein was captured through anti-DDK affinity column followed by conventional chromatography steps.
Protein Families	Druggable Genome, Transmembrane
Full Length	Full L.

GENE INFORMATION

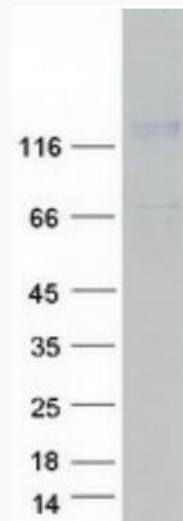
Gene Name [SEZ6 seizure related 6 homolog \[Homo sapiens \(human\) \]](#)

 Tel: 1-631-559-9269 1-516-512-3133

 Email: info@creative-biomart.com  Fax: 1-631-938-8127

 45-1 Ramsey Road, Shirley, NY 11967, USA

Official Symbol	SEZ6
Synonyms	BSRPC
Gene ID	124925
mRNA Refseq	NM_178860.5
Protein Refseq	NP_849191.3
MIM	616666
UniProt ID	Q53EL9



Coomassie blue staining of purified SEZ6 protein.

 Tel: 1-631-559-9269 1-516-512-3133

 Email: info@creative-biomart.com  Fax: 1-631-938-8127

 45-1 Ramsey Road, Shirley, NY 11967, USA