

Recombinant Human SEZ6L protein, His-tagged

Cat. No. SEZ6L-521H Lot. No. (See product label)

SPECIFICATION

Product Overview	Recombinant Human SEZ6L protein(Q9BYH1)(Leu29-Ala958), fused with His tag, was expressed in HEK293.
Species	Human
Source	HEK293
ProteinLength	Leu29-Ala958
Form	Lyophilized from 0.22 µm filtered solution in PBS, pH7.4.
Molecular Mass	The protein has a calculated MW of 103kDa.The reducing (R) heterodimer protein migrates as 150-235 kDa due to glycosylation
Endotoxin	<1EU/mg
Purity	SDS-PAGE>90%SEC>95%
Storage	Store at -20°C.
Reconstitution	sterile H16O

GENE INFORMATION

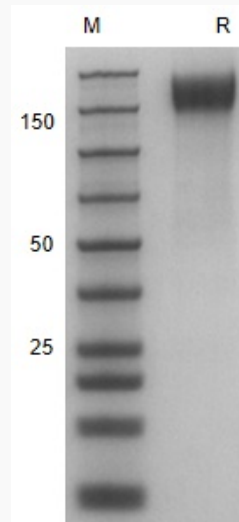
Gene Name SEZ6L seizure related 6 homolog (mouse)-like [Homo sapiens]

 Tel: 1-631-559-9269 1-516-512-3133

 Email: info@creative-biomart.com  Fax: 1-631-938-8127

 45-1 Ramsey Road, Shirley, NY 11967, USA

Official Symbol	SEZ6L
Synonyms	SEZ6L; seizure related 6 homolog (mouse)-like; seizure related gene 6 (mouse) like; seizure 6-like protein; seizure related gene 6-like;
Gene ID	23544
mRNA Refseq	NM_001184773
Protein Refseq	NP_001171702
MIM	607021
UniProt ID	Q9BYH1

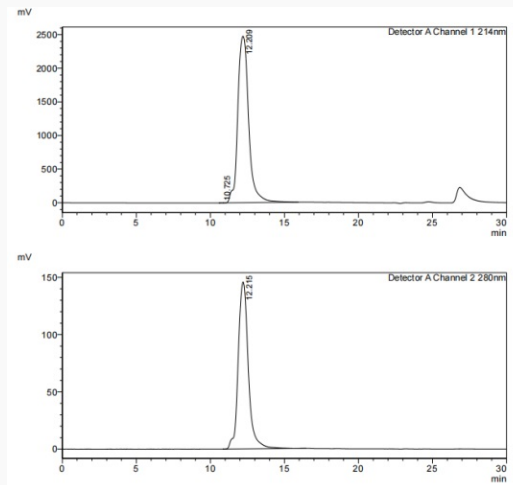
SDS-PAGE

 Tel: 1-631-559-9269 1-516-512-3133

 Email: info@creative-biomart.com  Fax: 1-631-938-8127

 45-1 Ramsey Road, Shirley, NY 11967, USA

SDS-HPLC



 Tel: 1-631-559-9269 1-516-512-3133

 Email: info@creative-biomart.com  Fax: 1-631-938-8127

 45-1 Ramsey Road, Shirley, NY 11967, USA