

# Recombinant Human SEZ6L Protein, Myc/DDK-tagged, C13 and N15-labeled

Cat. No. SEZ6L-6000H Lot. No. (See product label)

## SPECIFICATION

<b>Product Overview</b>	SEZ6L MS Standard C13 and N15-labeled recombinant protein (NP_066938) with a C-terminal MYC/DDK tag, was expressed in HEK293 cells.
<b>Species</b>	Human
<b>Source</b>	HEK293
<b>Description</b>	SEZ6L (Seizure Related 6 Homolog Like) is a Protein Coding gene. Diseases associated with SEZ6L include Lung Cancer. An important paralog of this gene is SEZ6.
<b>Molecular Mass</b>	109 kDa
<b>AA Sequence</b>	<p>MPAARPPAAGLRGISLFLALLLGSPAAALERDALPEGDASPLGPLYLLPSGAPERGSP  GKEHPEERVVTAPPSSSQSAEVLGELVLDGTAPSAHHDIPALSPLLPEEARPKHALP  PKKKLPSLKQVNSARKQLRPKATSAATVQRAGSQPASQGLDLLSSSTEKPGPPGDP  DPIVASEEASEVPLWLDRKESAVPTTPAPLQISPFTSQPYVAHTLPQRPEPGEPGPD  MAQEAPQEDTSPMALMDKGENELTGSASEESQETTTSTIITTTTITTEQAPALCSVSF  SNPEGYIDSSDYPLLPLNNFLECTYNVTVYTYGYVELQKSVNLSDGELLSIRGVDG  PTLTVLANQTLLEGGQVIRSPTNTISVYFRFTQDDGLGTFQLHYQAFMLSCNFRRP  DSGDVTVMDLHSGGVAHFHCHLGYELQGAKMLTCINASKPHWSSQEPICSAPCGG  AVHNATIGRVLSPSYENTNGSQFCIWTIEAPEGQKLHLHFERLLLHDKDRMTVHSG  QTNKSALLYDSLQTESVPFEGLLSEGNTIRIEFTSDQARAASTFNIRFEAFEKGHCYE</p>

 Tel: 1-631-559-9269 1-516-512-3133

 Email: [info@creative-biomart.com](mailto:info@creative-biomart.com)  Fax: 1-631-938-8127

 45-1 Ramsey Road, Shirley, NY 11967, USA



PYIQNGNFTTSDPTYNIGTIVEFTCDPGHSLEQGPAAIECINVRDPYWNDTEPLCRAM  
 CGGELSAVAGVVLSPNWPEPYVEGEDCIWKIHVGEKRIFLDIQFLNLSNSDILTIYD  
 GDEVMPHILGQYLGNSGPQKLYSSTPDLTIQFHSDPAGLIFGKGQGFIMNYIEVSRN  
 DSCSDLPEIQNGWKTTSHTELVRGARITYQCDPGYDIVGSDTLTCQWDLWSDDPP  
 FCEKIMYCTDPGEVDHSTRLLISDPVLLVGTTIQYTCNPGFVLEGSSLLTCYSRETGTPI  
 WTSRLPHCVSEESLACDNPGLPENGYQILYKRLYLPGESLTFMCYEGFELMGEVTIR  
 CILGQPSHWNGPLPVCKVNQDSFEHALEVAEAAAETSLEGGNMALAI FIPVLIISLLLG  
 GAYIYITRCRYYSNLRLPLMYSHPYQSITVETFDNPIYETGETREYEVSITRTRPLEQ  
 KLISEEDLAANDILDYKDDDDKV

<b>Purity</b>	> 80% as determined by SDS-PAGE and Coomassie blue staining
<b>Stability</b>	Stable for 3 months from receipt of products under proper storage and handling conditions.
<b>Storage</b>	Store at -80 centigrade. Avoid repeated freeze-thaw cycles.
<b>Concentration</b>	50 µg/mL as determined by BCA
<b>Storage Buffer</b>	100 mM glycine, 25 mM Tris-HCl, pH 7.3.

## GENE INFORMATION

<b>Gene Name</b>	SEZ6L seizure related 6 homolog like [ Homo sapiens (human) ]
<b>Official Symbol</b>	SEZ6L
<b>Synonyms</b>	SEZ6L; seizure related 6 homolog (mouse)-like; seizure related gene 6 (mouse) like; seizure 6-like protein; seizure related gene 6-like;
<b>Gene ID</b>	23544

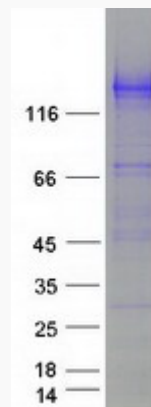
mRNA Refseq [NM\\_021115](#)

Protein Refseq [NP\\_066938](#)

MIM [607021](#)

UniProt ID [Q9BYH1](#)

SDS-PAGE



 Tel: 1-631-559-9269 1-516-512-3133

 Email: [info@creative-biomart.com](mailto:info@creative-biomart.com)  Fax: 1-631-938-8127

 45-1 Ramsey Road, Shirley, NY 11967, USA