

Recombinant Human SEZ6L2 protein, His-tagged

Cat. No. SEZ6L2-218H Lot. No. (See product label)

SPECIFICATION

Product Overview	Recombinant Human SEZ6L2 protein(Q6UXD5)(Met1-Asn844), fused with His tag, was expressed in HEK293.
Species	Human
Source	HEK293
ProteinLength	Met1-Asn844
Form	Lyophilized from 0.22 µm filtered solution in PBS, pH7.4.
Molecular Mass	The protein has a calculated MW of 89kDa. The reducing (R) heterodimer protein migrates as 130-200 kDa due to glycosylation
Endotoxin	<1EU/mg
Purity	SDS-PAGE>90%SEC>95%
Storage	Store at -20°C.
Reconstitution	sterile H17O

GENE INFORMATION

Gene Name	SEZ6L2 seizure related 6 homolog (mouse)-like 2 [Homo sapiens]
------------------	--

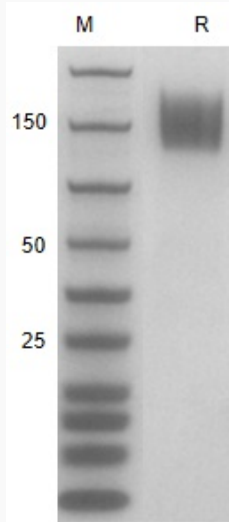
 Tel: 1-631-559-9269 1-516-512-3133

 Email: info@creative-biomart.com  Fax: 1-631-938-8127

 45-1 Ramsey Road, Shirley, NY 11967, USA

Official Symbol	SEZ6L2
Synonyms	SEZ6L2; seizure related 6 homolog (mouse)-like 2; seizure 6-like protein 2; FLJ90517; PSK 1; type I transmembrane receptor (seizure related protein); type I transmembrane receptor (seizure-related protein); PSK-1;
Gene ID	26470
mRNA Refseq	NM_001114099
Protein Refseq	NP_001107571
UniProt ID	Q6UXD5

SDS-PAGE



The SDS-PAGE gel image displays two lanes. Lane M is a molecular weight marker with visible bands at 150, 50, and 25 kDa. Lane R shows a single, prominent protein band at approximately 150 kDa, corresponding to the expected size of the SEZ6L2 protein.

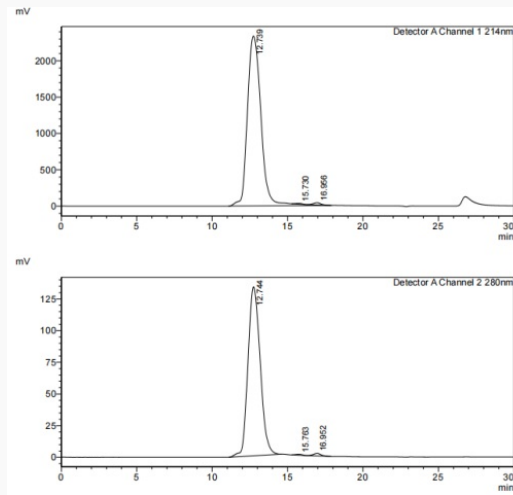
Tel: 1-631-559-9269 1-516-512-3133

Email: info@creative-biomart.com Fax: 1-631-938-8127

45-1 Ramsey Road, Shirley, NY 11967, USA



SDS-HPLC



Tel: 1-631-559-9269 1-516-512-3133

Email: info@creative-biomart.com Fax: 1-631-938-8127

45-1 Ramsey Road, Shirley, NY 11967, USA