



LSPVIYDSDMDDVPERGLISDAQSLYVELLSETPANPLLLSLRFEAFEEDRCFAPFLA
HGNVTTTTDPEYRPGALATFSCLPGYALEPPGPPNAIECVDPTEPHWNDTEPACKAM
CGGELSEPAGVVLSPDWPQSYSPGQDCVWGVHVQEEKRILLQVEILNVREGDMLT
LFDGDGPSARVLAQLRGPQPRRLLSSGPDLTQFQAPPGPPNPGLGQGFLVLFK
EVPRNDTCPELPPPEWGWRTASHGDLIRGTVLTYQCEPGYELGSDILTCQWDLS
WSAAPPACQKIMTCADPGEIANGHRTASDAGFPVGVSHVQYRCLPGYSLEGAAMLT
CYSRDTGTPKWSDRVPKCALKYEPCLNPGVPENGYQTLYKHHYQAGESLRFFCYE
GFELIGEVTITCVPGHPSQWTSQPPLCKVTQTDDPSRQLEGGNLALAILLPLGLVIVL
GSGVYIYYTKLQGKSLFGFSGSHSYSPITVESDFSNPLYEAGDTREYEVSITRTRPLE
QKLISEEDLAANDILDYKDDDDKV

Purity > 80% as determined by SDS-PAGE and Coomassie blue staining

Stability Stable for 3 months from receipt of products under proper storage and handling conditions.

Storage Store at -80 centigrade. Avoid repeated freeze-thaw cycles.

Concentration 50 µg/mL as determined by BCA

Storage Buffer 100 mM glycine, 25 mM Tris-HCl, pH 7.3.

GENE INFORMATION

Gene Name SEZ6L2 seizure related 6 homolog like 2 [Homo sapiens (human)]

Official Symbol SEZ6L2

Synonyms SEZ6L2; seizure related 6 homolog (mouse)-like 2; seizure 6-like protein 2; FLJ90517; PSK 1; type I transmembrane receptor (seizure related protein); type I transmembrane receptor (seizure-related protein); PSK-1;

Tel: 1-631-559-9269 1-516-512-3133

Email: info@creative-biomart.com Fax: 1-631-938-8127

45-1 Ramsey Road, Shirley, NY 11967, USA

Gene ID 26470

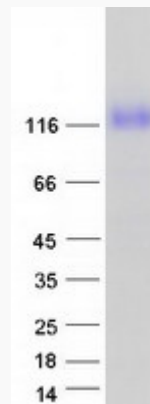
mRNA Refseq NM_001114099

Protein Refseq NP_001107571

MIM 616667

UniProt ID Q6UXD5

SDS-PAGE



Tel: 1-631-559-9269 1-516-512-3133

Email: info@creative-biomart.com Fax: 1-631-938-8127

45-1 Ramsey Road, Shirley, NY 11967, USA