

Recombinant Human Stratifin, GST-tagged

Cat. No. SFN-1421H Lot. No. (See product label)

SPECIFICATION

Product Overview Recombinant human full-length 14-3-3sigma was expressed in *E. coli* cells using a N-terminal GST tag. MW=51kDa.

Species Human

Source E.coli

Description 14-3-3 σ or stratifin is a protein that is strongly induced by gamma irradiation and other DNA-damaging agents. The induction of 14-3-3 σ is mediated by a p53 responsive element. Exogenous introduction of 14-3-3 σ into cycling cells results in a G2 cell cycle arrest. Knockout of 14-3-3 σ in cells showed that the cells are unable to maintain cell cycle arrest after DNA damage. The 14-3-3 σ $-/-$ cells die as they enter mitosis. This process is associated with a failure of the 14-3-3 σ -deficient cells to sequester the proteins that initiate mitosis and prevent them from entering the nucleus. Thus, 14-3-3 σ plays an important role in maintaining the G2 checkpoint in cells and preventing mitotic death.

Sequence Full-length.

Applications Western Blot.

Storage And Stability Store product at -70°C . For optimal storage, aliquot target into smaller quantities after centrifugation and store at recommended temperature. For most favorable performance, avoid repeated handling and multiple freeze/thaw cycles.

 Tel: 1-631-559-9269 1-516-512-3133

 Email: info@creative-biomart.com  Fax: 1-631-938-8127

 45-1 Ramsey Road, Shirley, NY 11967, USA

GENE INFORMATION

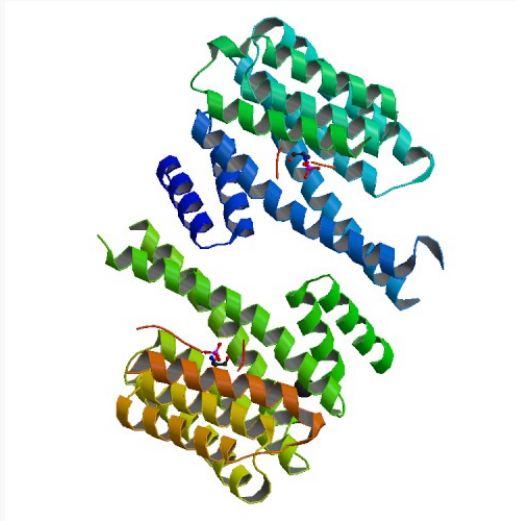
Gene Name	SFN stratifin [Homo sapiens]
Synonyms	SFN; stratifin; YWHAS; 14-3-3 sigma; 14-3-3 protein sigma; Stratifin; Epithelial cell marker protein 1
Gene ID	2810
mRNA Refseq	NM_006142
Protein Refseq	NP_006133
UniProt ID	P31947
Chromosome Location	1p36.11
MIM	601290
Pathway	Cell Cycle; p53 signaling pathway
Function	protein kinase C inhibitor activity; protein domain specific binding

 Tel: 1-631-559-9269 1-516-512-3133

 Email: info@creative-biomart.com  Fax: 1-631-938-8127

 45-1 Ramsey Road, Shirley, NY 11967, USA

PDB rendering based
on 1ywt.



 Tel: 1-631-559-9269 1-516-512-3133

 Email: info@creative-biomart.com  Fax: 1-631-938-8127

 45-1 Ramsey Road, Shirley, NY 11967, USA