

Recombinant Human SFN Protein, His-tagged

Cat. No. SFN-149H Lot. No. (See product label)

SPECIFICATION

Product Overview	Recombinant Human SFN fused with His tag at N-terminal was expressed in Insect cells.
Species	Human
Source	Insect Cells
Description	14-3-3 sigma or stratifin is a protein that is strongly induced by gamma irradiation and other DNA-damaging agents. The induction of 14-3-3 sigma is mediated by a p53 responsive element. Exogenous introduction of 14-3-3 sigma into cycling cells results in a G2 cell cycle arrest. Knockout of 14-3-3 sigma in cells showed that the cells are unable to maintain cell cycle arrest after DNA damage. The 14-3-3sigma -/- cells die as they enter mitosis. This process is associated with a failure of the 14-3-3sigma-deficient cells to sequester the proteins that initiate mitosis and prevent them from entering the nucleus. Thus, 14-3-3 sigma plays an important role in maintaining the G2 checkpoint in cells and preventing mitotic death.
Form	50mM sodium phosphate, pH 7.0, 300mM NaCl, 150mM imidazole, 0.1mM PMSF, 0.25mM DTT, 25% glycerol
Molecular Mass	30 kDa
Purity	> 95%
Applications	Western Blot

 Tel: 1-631-559-9269 1-516-512-3133

 Email: info@creative-biomart.com  Fax: 1-631-938-8127

 45-1 Ramsey Road, Shirley, NY 11967, USA

Stability	1 year at -70 centigrade from date of shipment.
Storage	Store product at -70centigrade. For optimal storage, aliquot target into smaller quantities after centrifugation and store at recommended temperature. For most favorable performance, avoid repeated handling and multiple freeze/thaw cycles.
Concentration	0.2 ug/ml

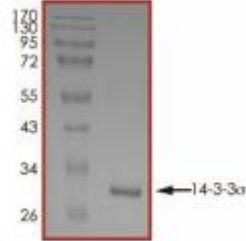
GENE INFORMATION

Gene Name	SFN stratifin [Homo sapiens]
Official Symbol	SFN
Synonyms	SFN; stratifin; 14-3-3 protein sigma; 14 3 3 sigma; YWHAS; 14-3-3 sigma; epithelial cell marker protein 1;
Gene ID	2810
mRNA Refseq	NM_006142
Protein Refseq	NP_006133
MIM	601290
UniProt ID	P31947

 Tel: 1-631-559-9269 1-516-512-3133

 Email: info@creative-biomart.com  Fax: 1-631-938-8127

 45-1 Ramsey Road, Shirley, NY 11967, USA



Tel: 1-631-559-9269 1-516-512-3133

Email: info@creative-biomart.com Fax: 1-631-938-8127

45-1 Ramsey Road, Shirley, NY 11967, USA