

Recombinant Human SFN Protein, Myc/DDK-tagged, C13 and N15-labeled

Cat. No. SFN-4511H **Lot. No.** (See product label)

SPECIFICATION

Product Overview	SFN MS Standard C13 and N15-labeled recombinant protein (NP_006133) with a C-terminal MYC/DDK tag, was expressed in HEK293 cells.
Species	Human
Source	HEK293
Description	This gene encodes a cell cycle checkpoint protein. The encoded protein binds to translation and initiation factors and functions as a regulator of mitotic translation. In response to DNA damage this protein plays a role in preventing DNA errors during mitosis.
Molecular Mass	27.8 kDa
AA Sequence	MERASLIQKAKLAEQAERYEDMAAFMKGAVEKGEELSCEERNLLSVAYKNVVGQ RAAWRVLSSIEQKSNEEGSSEEKGPVREYREKVVETELQGVCDTVGLLLDSHLIKEAG DAESRVFYLMKMGDYRYLAEVATGDDKKRIIDSARSAYQEAMDISKKEMPPTNPIR LGLALNFSVFHYEIANSPPEAISLAKTTFDEAMADLHTLSEDSYKDSTLIMQLLRDNL LWTADNAGEEGGEAPQEPQSTRTRPLEQKLISEEDLAANDILDYKDDDDKV
Purity	> 80% as determined by SDS-PAGE and Coomassie blue staining
Stability	Stable for 3 months from receipt of products under proper storage and handling conditions.

 Tel: 1-631-559-9269 1-516-512-3133

 Email: info@creative-biomart.com  Fax: 1-631-938-8127

 45-1 Ramsey Road, Shirley, NY 11967, USA

Storage	Store at -80 centigrade. Avoid repeated freeze-thaw cycles.
----------------	---

Concentration	50 µg/mL as determined by BCA
----------------------	-------------------------------

Storage Buffer	100 mM glycine, 25 mM Tris-HCl, pH 7.3.
-----------------------	---

GENE INFORMATION

Gene Name	SFN stratifin [Homo sapiens (human)]
------------------	--

Official Symbol	SFN
------------------------	-----

Synonyms	SFN; stratifin; 14-3-3 protein sigma; 14 3 3 sigma; YWHAS; 14-3-3 sigma; epithelial cell marker protein 1;
-----------------	--

Gene ID	2810
----------------	------

mRNA Refseq	NM_006142
--------------------	-----------

Protein Refseq	NP_006133
-----------------------	-----------

MIM	601290
------------	--------

UniProt ID	P31947
-------------------	--------

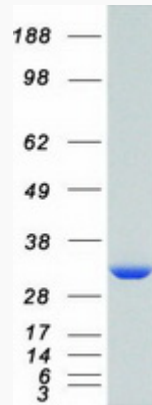
 Tel: 1-631-559-9269 1-516-512-3133

 Email: info@creative-biomart.com  Fax: 1-631-938-8127

 45-1 Ramsey Road, Shirley, NY 11967, USA



SDS-PAGE



Tel: 1-631-559-9269 1-516-512-3133

Email: info@creative-biomart.com Fax: 1-631-938-8127

45-1 Ramsey Road, Shirley, NY 11967, USA