

# Recombinant Human SFN protein(1-248aa), His-GST&Myc-tagged

**Cat. No.** SFN-4643H    **Lot. No.** (See product label)

## SPECIFICATION

<b>Product Overview</b>	Recombinant Human SFN protein(P31947)(1-248aa), fused with N-terminal His and GST and C-terminal Myc tag, was expressed in E. coli.
<b>Species</b>	Human
<b>Source</b>	E.coli
<b>ProteinLength</b>	1-248aa
<b>Form</b>	If the delivery form is liquid, the default storage buffer is Tris/PBS-based buffer, 5%-50% glycerol. If the delivery form is lyophilized powder, the buffer before lyophilization is Tris/PBS-based buffer, 6% Trehalose, pH 8.0.
<b>Molecular Mass</b>	62.9 kDa
<b>Purity</b>	Greater than 85% as determined by SDS-PAGE.
<b>Storage</b>	Store at -20°C/-80°C upon receipt, aliquoting is necessary for mutiple use. Avoid repeated freeze-thaw cycles.
<b>Reconstitution</b>	We recommend that this vial be briefly centrifuged prior to opening to bring the contents to the bottom. Please reconstitute protein in deionized sterile water to a concentration of 0.1-1.0 mg/mL. We recommend to add 5-50% of glycerol (final concentration) and aliquot for long-term storage at -20°C/-80°C.

 Tel: 1-631-559-9269    1-516-512-3133

 Email: [info@creative-biomart.com](mailto:info@creative-biomart.com)     Fax: 1-631-938-8127

 45-1 Ramsey Road, Shirley, NY 11967, USA



**AA Sequence**

MERASLIQKAKLAEQAERYEDMAAFMKGAVEKGEELSCEERNLLSVAYKNVVGQ  
RAAWRVLSSIEQKSNEEGSSEEKGPEVREYREKVVETELQGVCDTVLGLLDShLIKEAG  
DAESRVFYLMKMGDYRYLAEVATGDDKKRIIDSARSAYQEAMDISKKEMPPTNPIR  
LGLALNFSVFHYEIANSPPEAISLAKTTFDEAMADLHTLSEDSYKDSTLIMQLLRDNL  
LWTADNAGEEGGEAPQEPQS

**GENE INFORMATION**

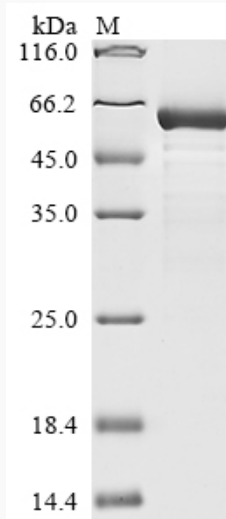
<b>Gene Name</b>	SFN stratifin [ Homo sapiens ]
<b>Official Symbol</b>	SFN
<b>Synonyms</b>	SFN; stratifin; 14-3-3 protein sigma; 14 3 3 sigma; YWHAS; 14-3-3 sigma; epithelial cell marker protein 1;
<b>Gene ID</b>	2810
<b>mRNA Refseq</b>	NM_006142
<b>Protein Refseq</b>	NP_006133
<b>MIM</b>	601290
<b>UniProt ID</b>	P31947

Tel: 1-631-559-9269 1-516-512-3133

Email: [info@creative-biomart.com](mailto:info@creative-biomart.com) Fax: 1-631-938-8127

45-1 Ramsey Road, Shirley, NY 11967, USA

**SDS-PAGE**



 Tel: 1-631-559-9269 1-516-512-3133

 Email: [info@creative-biomart.com](mailto:info@creative-biomart.com)  Fax: 1-631-938-8127

 45-1 Ramsey Road, Shirley, NY 11967, USA