

Recombinant Human SFN protein(1-248aa), His&Myc-tagged

Cat. No. SFN-4644H Lot. No. (See product label)

SPECIFICATION

Product Overview	Recombinant Human SFN protein(P31947)(1-248aa), fused with N-terminal His and C-terminal Myc tag, was expressed in E. coli.
Species	Human
Source	E.coli
ProteinLength	1-248aa
Form	If the delivery form is liquid, the default storage buffer is Tris/PBS-based buffer, 5%-50% glycerol. If the delivery form is lyophilized powder, the buffer before lyophilization is Tris/PBS-based buffer, 6% Trehalose, pH 8.0.
Molecular Mass	32.8 kDa
Purity	Greater than 90% as determined by SDS-PAGE.
Storage	Store at -20°C/-80°C upon receipt, aliquoting is necessary for mutiple use. Avoid repeated freeze-thaw cycles.
Reconstitution	We recommend that this vial be briefly centrifuged prior to opening to bring the contents to the bottom. Please reconstitute protein in deionized sterile water to a concentration of 0.1-1.0 mg/mL. We recommend to add 5-50% of glycerol (final concentration) and aliquot for long-term storage at -20°C/-80°C.

 Tel: 1-631-559-9269 1-516-512-3133

 Email: info@creative-biomart.com  Fax: 1-631-938-8127

 45-1 Ramsey Road, Shirley, NY 11967, USA

AA Sequence

MERASLIQKAKLAEQAERYEDMAAFMKGAVEKGEELSCEERNLLSVAYKNVVGQ
RAAWRVLSSIEQKSNEEGSSEEKGPEVREYREKVVETELQGVCDTVLGLLDShlikeag
DAESRVFYlKMKGDYYRYLAEVATGDDKKRIIDSARSAYQEAMDISKKEMPPTNPIR
LGLALNFSVfHYEIANSPeeAISLAKTTFDEAMADLHTLSEDSYKDSTLIMQLLRDNLt
LWTADNAGEEGGEAPQEPQS

GENE INFORMATION

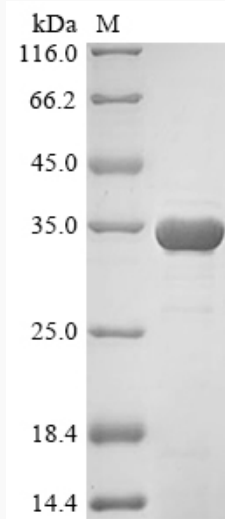
Gene Name	SFN stratifin [Homo sapiens]
Official Symbol	SFN
Synonyms	SFN; stratifin; 14-3-3 protein sigma; 14 3 3 sigma; YWHAS; 14-3-3 sigma; epithelial cell marker protein 1;
Gene ID	2810
mRNA Refseq	NM_006142
Protein Refseq	NP_006133
MIM	601290
UniProt ID	P31947

 Tel: 1-631-559-9269 1-516-512-3133

 Email: info@creative-biomart.com  Fax: 1-631-938-8127

 45-1 Ramsey Road, Shirley, NY 11967, USA

SDS-PAGE



 Tel: 1-631-559-9269 1-516-512-3133

 Email: info@creative-biomart.com  Fax: 1-631-938-8127

 45-1 Ramsey Road, Shirley, NY 11967, USA