

Recombinant Full Length Human SFN Protein, C-Flag-tagged

Cat. No. SFN-942HFL **Lot. No.** (See product label)

SPECIFICATION

Product Overview	Recombinant Full Length Human SFN Protein, fused to Flag-tag at C-terminus, was expressed in Mammalian cells.
Species	Human
Source	Mammalian Cells
Description	This gene encodes a cell cycle checkpoint protein. The encoded protein binds to translation and initiation factors and functions as a regulator of mitotic translation. In response to DNA damage this protein plays a role in preventing DNA errors during mitosis.
Form	25 mM Tris HCl, pH 7.3, 100 mM glycine, 10% glycerol.
Molecular Mass	27.6 kDa
AA Sequence	MERASLIQKAKLAEQAERYEDMAAFMKGAVEKGEELSCEERNLLSVAYKNVVGGQ RAAWRVLSSIEQKSN EEGSEEKGPEVREYREKVETELQGVCDTVLGLLDSHLIKEA GDAESRVFYLKMKGDYYRYLAEVATGDDK KRIIDSARSAYQEAMDISKKEMPPTNPI RLGLALNFSVFHYEIANSPPEEAIKAKTTTFDEAMADLHTLSE DSYKDSTLIMQLLRDNLTLWTADNAGEEGGEAPQEPQSTRTRPLEQKLISEEDLAAN DILDYKDDDDKV
Purity	> 80% as determined by SDS-PAGE and Coomassie blue staining.

 Tel: 1-631-559-9269 1-516-512-3133

 Email: info@creative-biomart.com  Fax: 1-631-938-8127

 45-1 Ramsey Road, Shirley, NY 11967, USA



Stability	Stable for 12 months from the date of receipt of the product under proper storage and handling conditions. Avoid repeated freeze-thaw cycles.
Storage	Store at -80 centigrade.
Concentration	>50 ug/mL as determined by microplate BCA method.
Preparation	Recombinant protein was captured through anti-DDK affinity column followed by conventional chromatography steps.
Protein Families	Druggable Genome, Secreted Protein
Protein Pathways	Cell cycle, p53 signaling pathway
Full Length	Full L.

GENE INFORMATION

Gene Name	SFN stratifin [Homo sapiens (human)]
Official Symbol	SFN
Synonyms	YWHAS
Gene ID	2810
mRNA Refseq	NM_006142.5
Protein Refseq	NP_006133.1
MIM	601290

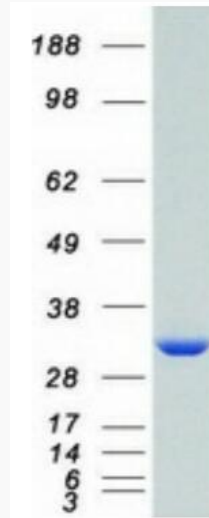
Tel: 1-631-559-9269 1-516-512-3133

Email: info@creative-biomart.com Fax: 1-631-938-8127

45-1 Ramsey Road, Shirley, NY 11967, USA

UniProt ID

P31947



Coomassie blue staining of purified SFN protein.

 Tel: 1-631-559-9269 1-516-512-3133

 Email: info@creative-biomart.com  Fax: 1-631-938-8127

 45-1 Ramsey Road, Shirley, NY 11967, USA