

## Recombinant Human SFPQ protein, His-tagged

Cat. No. SFPQ-2617H Lot. No. (See product label)

### SPECIFICATION

<b>Product Overview</b>	Recombinant Human SFPQ protein(1-300 aa), fused with N-terminal His tag, was expressed in E.coli.
<b>Species</b>	Human
<b>Source</b>	E.coli
<b>ProteinLength</b>	1-300 aa
<b>Form</b>	The purified protein was Lyophilized from sterile PBS (58mM Na <sub>2</sub> HPO <sub>4</sub> , 17mM NaH <sub>2</sub> PO <sub>4</sub> , 68mM NaCl, pH7.4). 5 % trehalose and 5 % mannitol are added as protectant before lyophilization.
<b>AASequence</b>	MSRDRFRSRGGGGGGFHRRGGGGGRGGLHDFRSPPPGMGLNQNRGPMGPGPG QSGPKPIPPPPHQQQQQPPPPQPPPHQPPHPQPHQQQQPPPPQDS SKPVVAQGPAPGVGSTPPASSSAPPATPPTSGAPPGSGPGPTPTPPPAVTSAP PGAPPPTPPSSGVPTTPQAGGPPPPAAVPGPGPGPKQGPGGPKGGKMPGG PKPGGGPGLSTPGGHPKPPRRGGGEPRGGRQHHPYHQHHQGPPPGGPGGRS EEKISDSEGFKANLSLLRRPGEKTYTQRCLF
<b>Purity</b>	85%, by SDS-PAGE with Coomassie Brilliant Blue staining.
<b>Storage</b>	Store at 2-8°C for 1-2 weeks. Aliquot and store at -20°C to -80°C for up to 3 months, reconstitution with sterile water and addition of an equal volume of glycerol. Avoid repeat freeze-thaw cycles.

 Tel: 1-631-559-9269 1-516-512-3133

 Email: [info@creative-biomart.com](mailto:info@creative-biomart.com)  Fax: 1-631-938-8127

 45-1 Ramsey Road, Shirley, NY 11967, USA

**Reconstitution**

Dissolve the product in 200 µl sterile water to achieve a working concentration of 0.25 g/µl. If experimental compatibility allows, mix the aqueous solution with an equal volume of glycerol (1:1 ratio) after initial reconstitution.

**GENE INFORMATION**
**Gene Name**

SFPQ splicing factor proline/glutamine-rich [ Homo sapiens ]

**Official Symbol**

SFPQ

**Synonyms**

SFPQ; splicing factor proline/glutamine-rich; splicing factor proline/glutamine rich (polypyrimidine tract binding protein associated); splicing factor, proline- and glutamine-rich; polypyrimidine tract binding protein associated; PSF; hPOMP100; 100 kDa DNA-pairing protein; PTB-associated splicing factor; PTB-associated-splicing factor; DNA-binding p52/p100 complex, 100 kDa subunit; polypyrimidine tract-binding protein-associated splicing factor; polypyrimidine tract-binding protein-associated-splicing factor; splicing factor proline/glutamine rich (polypyrimidine tract-binding protein-associated); POMP100; DKFZp547C228; DKFZp667K0521; DKFZp686K1282;

**Gene ID**

6421

**mRNA Refseq**

NM\_005066

**Protein Refseq**

NP\_005057

**MIM**

605199

**UniProt ID**

P23246

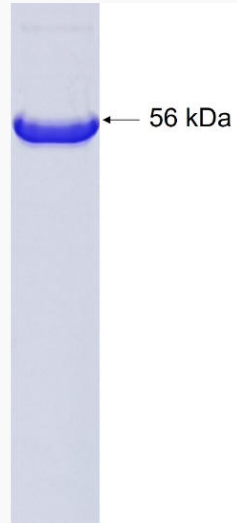
 Tel: 1-631-559-9269 1-516-512-3133

 Email: [info@creative-biomart.com](mailto:info@creative-biomart.com)  Fax: 1-631-938-8127

 45-1 Ramsey Road, Shirley, NY 11967, USA



SDS-PAGE



Tel: 1-631-559-9269 1-516-512-3133

Email: [info@creative-biomart.com](mailto:info@creative-biomart.com) Fax: 1-631-938-8127

45-1 Ramsey Road, Shirley, NY 11967, USA