

Active Recombinant Human SFRP1 protein, His-tagged

Cat. No. SFRP1-221H Lot. No. (See product label)

SPECIFICATION

Product Overview	Active Recombinant Human SFRP1 protein(NP_003003.3) (Met 1-Lys 314) was expressed in HEK293 with a C-terminal polyhistidine tag.
Species	Human
Source	HEK293
ProteinLength	1-314 aa
Form	Lyophilized from sterile PBS, pH 7.4.
Bio-activity	Measured by its ability to inhibit proliferation of HeLa human cervical epithelial carcinoma cells. The ED50 for this effect is typically 2.5-10 µg/ml.
Molecular Mass	The recombinant human sFRP1 consists of 294 amino acids after removal of the signal peptide and has a predicted molecular mass of 34 kDa. In SDS-PAGE under reducing conditions, it migrates with an apparent molecular mass of 38 kDa due to glycosylation.
Endotoxin	< 1.0 EU per µg of the protein as determined by the LAL method.
Purity	> 97 % as determined by SDS-PAGE
Storage	Store it under sterile conditions at -20°C to -80°C upon receiving. Recommend to aliquot the protein into smaller quantities for optimal storage. Avoid repeated freeze-

 Tel: 1-631-559-9269 1-516-512-3133

 Email: info@creative-biomart.com  Fax: 1-631-938-8127

 45-1 Ramsey Road, Shirley, NY 11967, USA

thaw cycles.

Reconstitution

It is recommended that sterile water be added to the vial to prepare a stock solution of 0.2 ug/ul. Centrifuge the vial at 4°C before opening to recover the entire contents.

GENE INFORMATION

Gene Name SFRP1 secreted frizzled-related protein 1 [Homo sapiens]

Official Symbol SFRP1

Synonyms SFRP1; secreted frizzled-related protein 1; FRP; FRP 1; SARP2; SARP-2; sFRP-1; secreted apoptosis-related protein 2; FRP1; FrzA; FRP-1;

Gene ID 6422

mRNA Refseq NM_003012

Protein Refseq NP_003003

MIM 604156

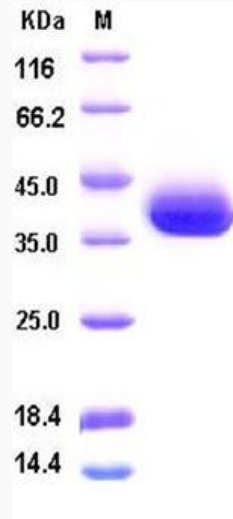
UniProt ID Q8N474

 Tel: 1-631-559-9269 1-516-512-3133

 Email: info@creative-biomart.com  Fax: 1-631-938-8127

 45-1 Ramsey Road, Shirley, NY 11967, USA

SDS-PAGE



 Tel: 1-631-559-9269 1-516-512-3133

 Email: info@creative-biomart.com  Fax: 1-631-938-8127

 45-1 Ramsey Road, Shirley, NY 11967, USA