

Recombinant Human SFTPA1 Protein, His-tagged

Cat. No. SFTPA1-1227H Lot. No. (See product label)

SPECIFICATION

Product Overview	Recombinant Human SFTPA1 Protein (Glu21-Phe248) with His tag was expressed in 293F.
Species	Human
Source	HEK293
ProteinLength	Glu21-Phe248
Description	This gene encodes a lung surfactant protein that is a member of a subfamily of C-type lectins called collectins. The encoded protein binds specific carbohydrate moieties found on lipids and on the surface of microorganisms. This protein plays an essential role in surfactant homeostasis and in the defense against respiratory pathogens. Mutations in this gene are associated with idiopathic pulmonary fibrosis.
Form	Freeze-dried powder
Molecular Mass	Predicted Molecular Mass: 25.8 kDa; Accurate Molecular Mass: 38 kDa
Purity	> 90%
Applications	Positive Control; Immunogen; SDS-PAGE; WB.
Stability	The thermal stability is described by the loss rate. The loss rate was determined by accelerated thermal degradation test, that is, incubate the protein at 37 centigrade for

 Tel: 1-631-559-9269 1-516-512-3133

 Email: info@creative-biomart.com  Fax: 1-631-938-8127

 45-1 Ramsey Road, Shirley, NY 11967, USA

48h, and no obvious degradation and precipitation were observed. The loss rate is less than 5% within the expiration date under appropriate storage condition.

Storage

Avoid repeated freeze/thaw cycles. Store at 2-8 centigrade for one month. Aliquot and store at -80 centigrade for 12 months.

Storage Buffer

20mM Tris, 150mM NaCl, pH8.0, containing 1mM EDTA, 1mM DTT, 0.01% SKL, 5% Trehalose and Proclin300.

Reconstitution

Reconstitute in 10mM PBS (pH7.4) to a concentration of 0.1-1.0 mg/mL. Do not vortex.

GENE INFORMATION

Gene Name

SFTPA1 surfactant protein A1 [Homo sapiens (human)]

Official Symbol

SFTPA1

Synonyms

SFTPA1; surfactant protein A1; SFTP1, surfactant, pulmonary associated protein A1; pulmonary surfactant-associated protein A1; COLEC4; SP A; SP A1; surfactant; pulmonary associated protein A1A; collectin-4; surfactant protein A1B; alveolar proteinosis protein; surfactant protein A1 variant AD 6A; surfactant protein A1 variant AD 6A2; surfactant protein A1 variant AD 6A3; surfactant protein A1 variant AD 6A4; surfactant protein A1 variant ACD 6A2; surfactant protein A1 variant ACD 6A3; surfactant protein A1 variant ACD 6A4; surfactant protein A1 variant ABD 6A2; surfactant protein A1 variant ABD 6A3; surfactant protein A1 variant ABD 6A4; surfactant, pulmonary-associated protein A1A; surfactant, pulmonary-associated protein A1B; 35 kDa pulmonary surfactant-associated protein; SPA; PSAP; PSPA; SP-A; SPA1; PSP-A; SFTP1; SP-A1; SFTPA1B; FLJ50593; FLJ51913; FLJ61144; FLJ77898; FLJ79095; FLJ99559; MGC133365; MGC198590;

 Tel: 1-631-559-9269 1-516-512-3133

 Email: info@creative-biomart.com  Fax: 1-631-938-8127

 45-1 Ramsey Road, Shirley, NY 11967, USA

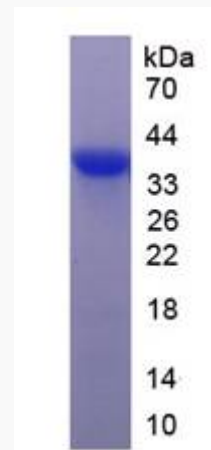
Gene ID 653509

mRNA Refseq NM_001093770

Protein Refseq NP_001087239

MIM 178630

UniProt ID Q8IWL2



Tel: 1-631-559-9269 1-516-512-3133

Email: info@creative-biomart.com Fax: 1-631-938-8127

45-1 Ramsey Road, Shirley, NY 11967, USA