

## Recombinant Human SFTPA1 Protein (21-248 aa), His-tagged

Cat. No. SFTPA1-2539H Lot. No. (See product label)

### SPECIFICATION

<b>Product Overview</b>	Recombinant Human SFTPA1 Protein (21-248 aa) is produced by Yeast expression system. This protein is fused with a 6xHis tag at the N-terminal. Research Area: Cell Biology. Protein Description: Full Length of Mature Protein.
<b>Species</b>	Human
<b>Source</b>	Yeast
<b>ProteinLength</b>	21-248 aa
<b>Description</b>	In presence of calcium ions, it binds to surfactant phospholipids and contributes to lower the surface tension at the air-liquid interface in the alveoli of the mammalian lung and is essential for normal respiration. Enhances the expression of MYO18A/SP-R210 on alveolar macrophages. (Microbial infection) Recognition of M.tuberculosis by dendritic cells may occur partially via this molecule. Can recognize, bind, and opsonize pathogens to enhance their elimination by alveolar macrophages.
<b>Form</b>	Tris-based buffer,50% glycerol
<b>Molecular Mass</b>	26.2 kDa
<b>AA Sequence</b>	EVKDVCGSPGIPGTPGSHGLPGRDGRDGLKGDPPGPMGPPGEMPCPPGNDG LPGAPGIPGECGEKGEPPERGPPGLPAHLDEELQATLHDFRHQILQTRGALSLQGSI MTVGEKVFSSNGQSITFDAIQEACARAGGRIAVPRNPEENEAIASFVKKYNTYAYVG LTEGSPSGDFRYSDGTPVNYTNWYRGEPAGRGKEQCVMYTDGQWDRNCLYS

 Tel: 1-631-559-9269 1-516-512-3133

 Email: [info@creative-biomart.com](mailto:info@creative-biomart.com)  Fax: 1-631-938-8127

 45-1 Ramsey Road, Shirley, NY 11967, USA

	RLTICEF
<b>Purity</b>	> 85% as determined by SDS-PAGE.
<b>Notes</b>	Repeated freezing and thawing is not recommended. Store working aliquots at 4 centigrade for up to one week.
<b>Storage</b>	The shelf life is related to many factors, storage state, buffer ingredients, storage temperature and the stability of the protein itself. Generally, the shelf life of liquid form is 6 months at -20 centigrade/-80 centigrade. The shelf life of lyophilized form is 12 months at -20 centigrade/-80 centigrade.
<b>Concentration</b>	A hardcopy of COA will be sent along with the products. Please refer to it for detailed information.

## GENE INFORMATION

<b>Gene Name</b>	SFTPA1 surfactant protein A1 [ Homo sapiens ]
<b>Official Symbol</b>	SFTPA1
<b>Synonyms</b>	SFTPA1; surfactant protein A1; COLEC4; SP A; SP A1; collectin-4; SPA; PSAP; PSPA; SP-A; SPA1; PSP-A; SFTP1; SP-A1; SFTPA1B; FLJ50593; FLJ51913; FLJ61144; FLJ77898; FLJ79095; FLJ99559; MGC133365; MGC198590;
<b>Gene ID</b>	653509
<b>mRNA Refseq</b>	NM_001093770
<b>Protein Refseq</b>	NP_001087239

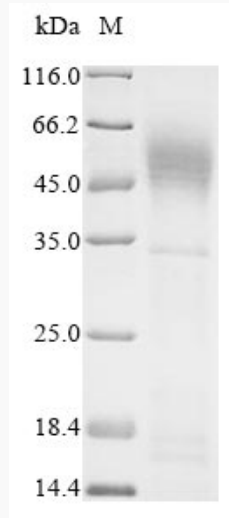
 Tel: 1-631-559-9269 1-516-512-3133

 Email: [info@creative-biomart.com](mailto:info@creative-biomart.com)  Fax: 1-631-938-8127

 45-1 Ramsey Road, Shirley, NY 11967, USA

<b>MIM</b>	178630
------------	--------

<b>UniProt ID</b>	Q8IWL2
-------------------	--------



(Tris-Glycine gel) Discontinuous SDS-PAGE (reduced) with 5% enrichment gel and 15% separation gel.

 Tel: 1-631-559-9269 1-516-512-3133

 Email: [info@creative-biomart.com](mailto:info@creative-biomart.com)  Fax: 1-631-938-8127

 45-1 Ramsey Road, Shirley, NY 11967, USA