

## Recombinant Mouse SFTPA1 protein, His-SUMO-tagged

Cat. No. SFTPA1-3394M Lot. No. (See product label)

### SPECIFICATION

<b>Product Overview</b>	Recombinant Mouse SFTPA1 protein(Asn21~Phe248), fused with Two N-terminal Tags, His-tag and SUMO-tag, was expressed in E.coli.
<b>Species</b>	Mouse
<b>Source</b>	E.coli
<b>ProteinLength</b>	Asn21~Phe248
<b>Form</b>	PBS, pH7.4, containing 0.01% SKL, 1mM DTT, 5% Trehalose and Proclin300.
<b>Molecular Mass</b>	30kDa
<b>Endotoxin</b>	<1.0EU per 1g (determined by the LAL method)
<b>Purity</b>	> 90%
<b>Storage</b>	Avoid repeated freeze/thaw cycles. Store at 2-8°C for one month. Aliquot and store at -80°C for 12 months.
<b>Reconstitution</b>	Reconstitute in 10mM PBS (pH7.4) to a concentration of 0.1-1.0 mg/mL. Do not vortex.

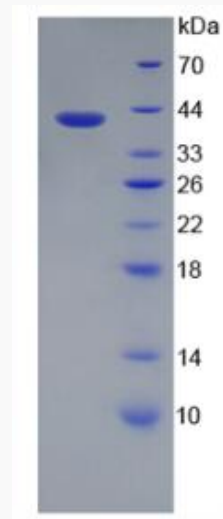
### GENE INFORMATION

 Tel: 1-631-559-9269 1-516-512-3133

 Email: [info@creative-biomart.com](mailto:info@creative-biomart.com)  Fax: 1-631-938-8127

 45-1 Ramsey Road, Shirley, NY 11967, USA

<b>Gene Name</b>	Sftpa1 surfactant associated protein A1 [ Mus musculus ]
<b>Official Symbol</b>	SFTPA1
<b>Synonyms</b>	SFTPA1; surfactant associated protein A1; pulmonary surfactant-associated protein A; PSAP; PSP-A; surfactant pulmonary associated protein A1; SP-A; Sftp1; Sftp-1;
<b>Gene ID</b>	20387
<b>mRNA Refseq</b>	NM_023134
<b>Protein Refseq</b>	NP_075623

**SDS-PAGE**


 Tel: 1-631-559-9269 1-516-512-3133

 Email: [info@creative-biomart.com](mailto:info@creative-biomart.com)  Fax: 1-631-938-8127

 45-1 Ramsey Road, Shirley, NY 11967, USA